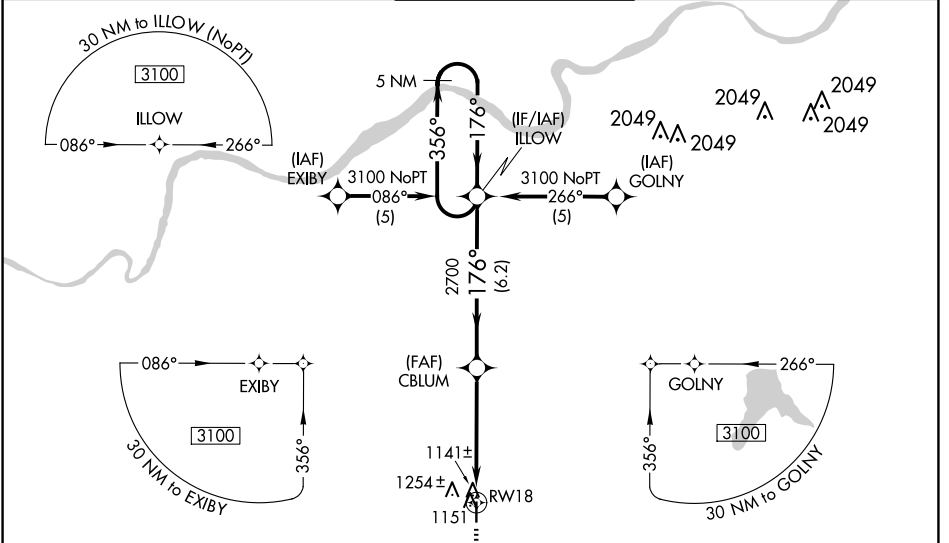


WAAS CH <b>53700</b> <b>W18A</b>	APP CRS <b>176°</b>	Rwy Idg TDZE Apt Elev	<b>4097</b> <b>1096</b> <b>1096</b>
--	------------------------	-----------------------------	---

# RNAV (GPS) RWY 18

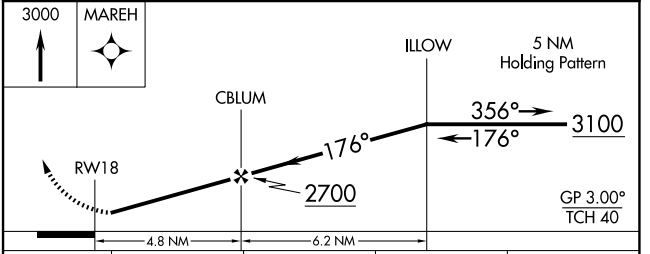
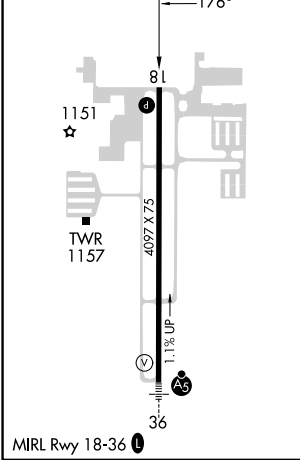
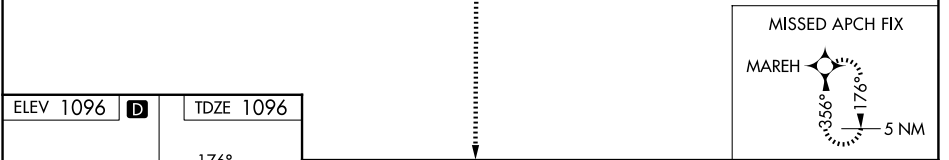
JOHNSON COUNTY EXEC (OJC)

RNP APCH. ▼ For uncompensated Baro-VNAV systems, LNAV/VNAV NA below -17°C or above 54°C.		MISSED APPROACH: Climb to 3000 direct MAREH and hold.	
ATIS <b>119.35</b>	KANSAS CITY APP CON <b>118.9 251.075</b>	EXECUTIVE TOWER* <b>126.0 (CTAF) 225.4</b>	UNICOM <b>122.95</b>



NC-2, 20 MAR 2025 to 17 APR 2025

NC-2, 20 MAR 2025 to 17 APR 2025



CATEGORY	A	B	C	D
LPV DA	1346-1 250 (300-1)			NA
LNAV/VNAV DA	1527-1½ 431 (500-1½)			NA
LNAV MDA	1560-1 464 (500-1)	1560-1¼ 464 (500-1¼)		NA
<b>C</b> CIRCLING	1620-1 524 (600-1)	1620-1½ 524 (600-1½)		NA