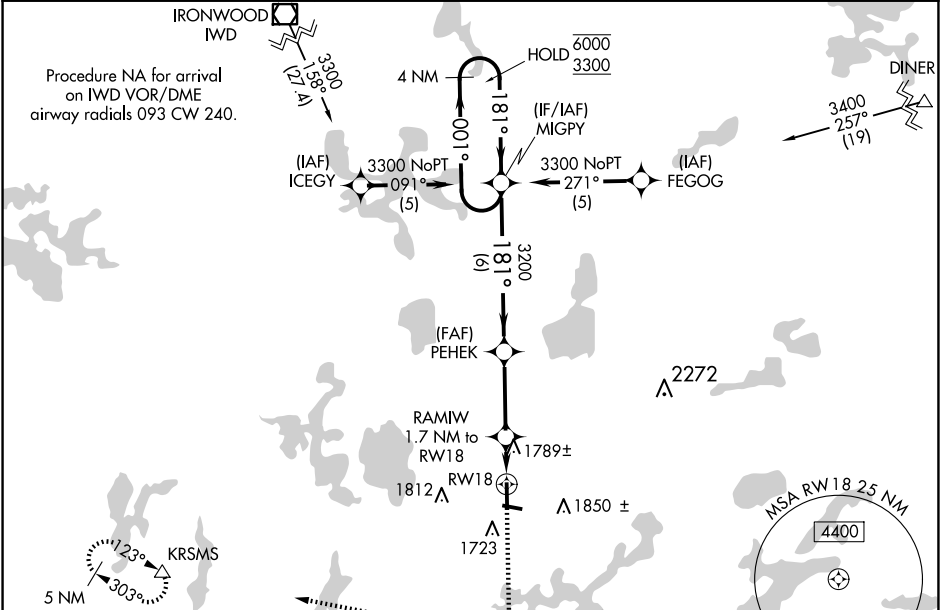


WAAS CH <b>72915</b> <b>W18A</b>	APP CRS <b>181°</b>	Rwy Idg TDZE Apt Elev	<b>5150</b> <b>1630</b> <b>1630</b>
--	------------------------	-----------------------------	---

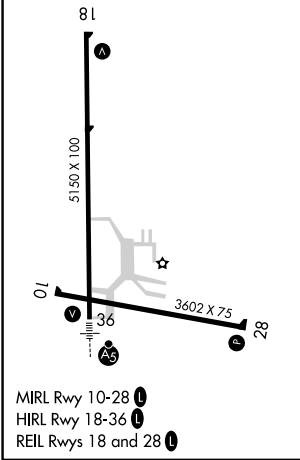
# RNAV (GPS) RWY 18

LAKELAND/NOBLE F LEE MEML FLD (A.R.V)

RNP APCH.		MISSED APPROACH: Climb to 6000 direct CEPMU and right turn on track 283° to KRMS and hold, continue climb-in-hold to 6000.
AWOS-3 <b>121.125</b>	MINNEAPOLIS CENTER <b>133.65 281.5</b>	UNICOM <b>122.7 (CTAF)</b>



ELEV 1630	TDZE 1630
-----------	-----------



6000	CEPMU	KRMS	4 NM Holding Pattern
↑	✦	↷ tr 283°	△
* LNAV only.		RAMIW 1.7 NM to RW18	PEHEK 3200
*1.2 NM to RW18		*2200	181° 001° 6000 3300
RW18 1.2 NM 0.6 NM		3200	GP 3.00° TCH 44
3 NM		6 NM	
CATEGORY	A	B	C
LPV DA	1974-1¼ 344 (400-1¼)		
LNAV/VNAV DA	2101-1¾ 471 (500-1¾)		
LNAV MDA	2040-1 410 (500-1)	2040-1¼ 410 (500-1¼)	
CIRCLING	2100-1 470 (500-1)	2200-1 570 (600-1)	2200-1½ 570 (600-1½)
			2220-2 590 (600-2)

EC-3, 20 MAR 2025 to 17 APR 2025

EC-3, 20 MAR 2025 to 17 APR 2025