

WAAS CH <b>53604</b> <b>W36A</b>	APP CRS <b>360°</b>	Rwy Idg <b>5550</b> TDZE <b>326</b> Apt Elev <b>333</b>
--	------------------------	---

# RNAV (GPS) RWY 36

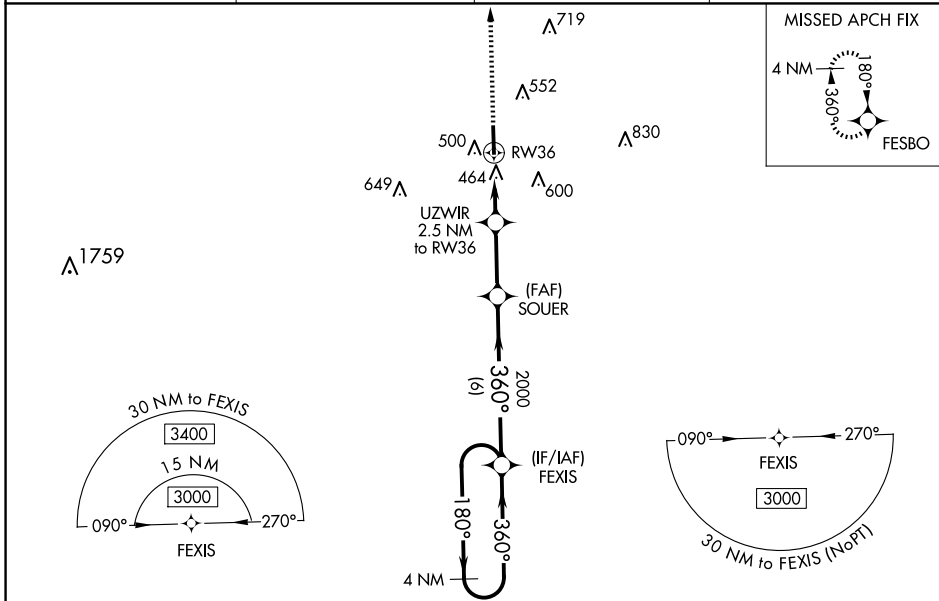
GEORGE M BRYAN (STF)

RNP APCH-GPS.

**⚠** For uncompensated Baro-VNAV systems, LNAV/VNAV NA below -15°C or above 54°C .  
**⚠** When local altimeter setting not received, use Golden Triangle Rgnl altimeter setting and increase LPV DA to 566 feet; increase LNAV/VNAV DA to 690 feet; increase all MDAs 40 feet and LNAV visibility Cat C/D 1/8 SM, and Circling visibility Cat C 1/4 SM. Baro-VNAV and VDP NA when using Golden Triangle Rgnl altimeter setting.

**MISSED APPROACH:** Climb to 3400 direct FESBO and hold, continue climb-in-hold to 3400.

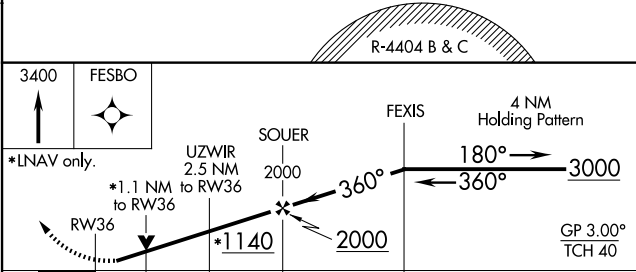
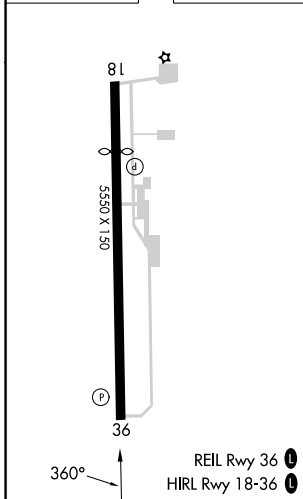
AWOS-3PT <b>118.975</b>	COLUMBUS APP CON* <b>135.6 323.275</b>	CLNC DEL <b>126.25</b>	UNICOM <b>122.7 (CTAF)</b>
----------------------------	---	---------------------------	-------------------------------



SC-4, 20 MAR 2025 to 17 APR 2025

SC-4, 20 MAR 2025 to 17 APR 2025

ELEV <b>333</b>	TDZE <b>326</b>
-----------------	-----------------



CATEGORY	A	B	C	D
LPV DA		526-3/4	200 (200-3/4)	
LNAV/VNAV DA		650-1	324 (400-1)	
LNAV MDA	720-1	394 (400-1)	720-1 1/8	394 (400-1/8)
<b>CIRCLING</b>	920-1	587 (600-1)	920-1 1/2	1020-2 1/4 687 (700-2 1/4)