

WAAS CH 69515 W24A	APP CRS 235°	Rwy Idg TDZE 681 Apt Elev 681
--	------------------------	---

RNAV (GPS) RWY 24

MAURY COUNTY RGNL (MRC)

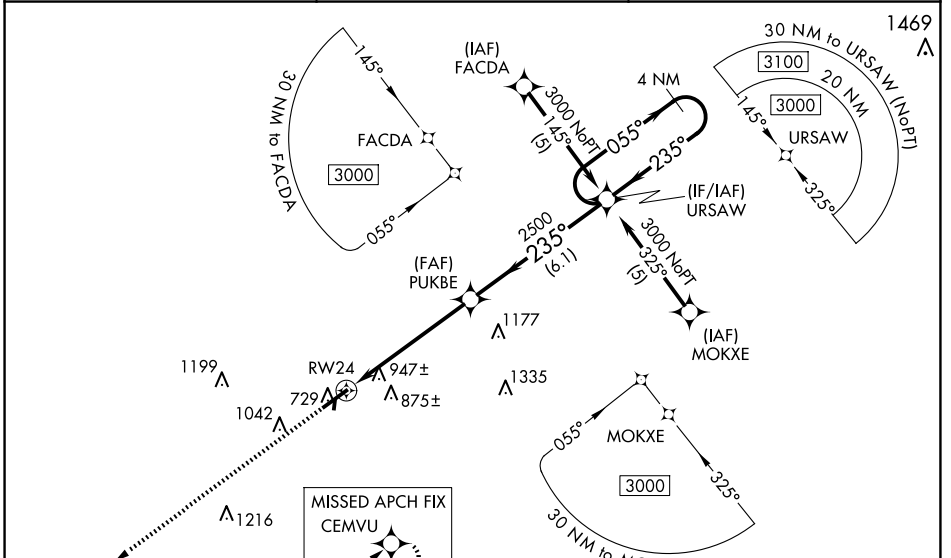
RNP APCH.

⚠ Inop table does not apply to LNAV/VNAV Cats A, B, and C and LNAV Cat C. For uncompensated Baro-VNAV systems, LNAV/VNAV NA below -16°C or above 47°C. Rwy 24 helicopter visibility reduction below ¼ SM NA. When local altimeter setting not received, use Nashville Intl altimeter setting and increase LPV DA to 1090 feet and LNAV/VNAV DA to 1438 feet and increase all MDA 120 feet; increase LPV and LNAV/VNAV all Cats visibility ½ SM, and LNAV Cats C and D visibility ¼ SM, and increase Circling Cat C visibility ½ SM. Baro-VNAV and VDP NA when using Nashville Intl altimeter setting.

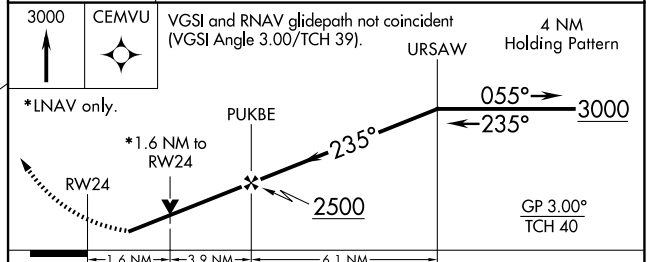
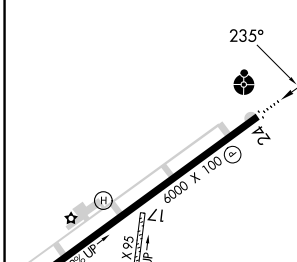
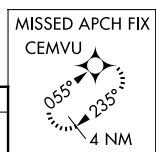
ODALS

MISSED APPROACH:
Climb to 3000 direct CEMVU and hold.

AWOS-3 128.625	MEMPHIS CENTER 125.85 379.25	UNICOM 122.8 (CTAF) 0
--------------------------	--	---------------------------------



ELEV 681	D	TDZE 681
-----------------	----------	-----------------



CATEGORY	A	B	C	D
LPV DA	981-1		300 (300-1)	
LNAV/ VNAV DA	1329-2¼		648 (700-2¼)	
LNAV MDA	1220-¾	539 (600-¾)	1220-1½	539 (600-1½)
CIRCLING	1320-1	1360-1	1380-2	1620-3
	639 (700-1)	679 (700-1)	699 (700-2)	939 (1000-3)

MIRL Rwy 6-24
REIL Rwy 6
REIL Rwy 24 **0**

SE-1, 20 MAR 2025 to 17 APR 2025

SE-1, 20 MAR 2025 to 17 APR 2025