

| | | |
|--|------------------------|--|
| WAAS CH 77827 W24A | APP CRS 241° | Rwy Idg TDZE Apt Elev 5500 2087 2087 |
|--|------------------------|--|

RNAV (GPS) RWY 24

VIRGINIA HIGHLANDS (VJI)

RNP APCH - GPS

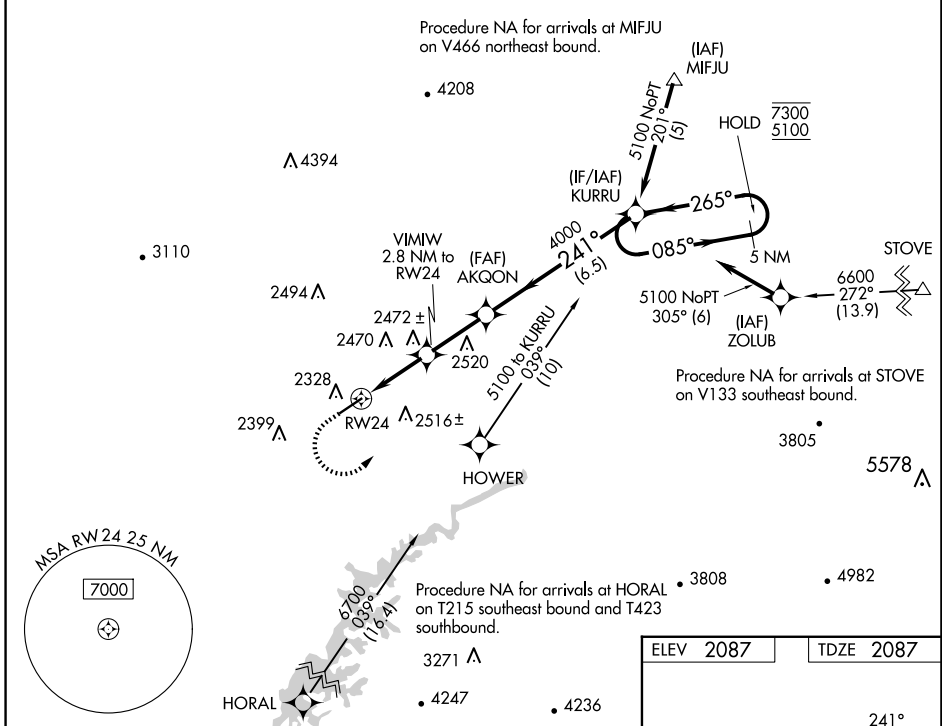
For uncompensated Baro-VNAV systems, LNAV/VNAV NA below -19°C or above 54°C. Rwy 24 helicopter visibility reduction below ¾ SM NA. Inop table does not apply to LPV. For inop ALS, reduce LNAV/VNAV Cat A/B visibility to 1¼ SM.

ODALS



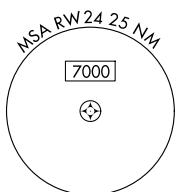
MISSED APPROACH: Climb to 2900 then climbing left turn to 7300 direct KURRU and hold, continue climb-in-hold.

| | | |
|--------------------------|---|---------------------------------|
| AWOS-3 128.125 | TRI CITY APP CON * 125.25 349.0 | UNICOM 122.8 (CTAF) 0 |
|--------------------------|---|---------------------------------|

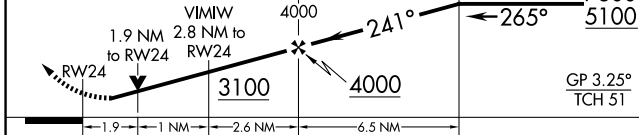


NE-3, 20 MAR 2025 to 17 APR 2025

NE-3, 20 MAR 2025 to 17 APR 2025

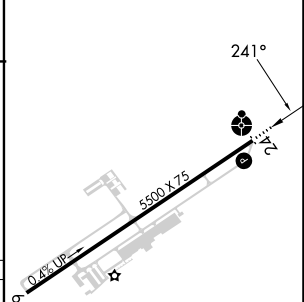


| | | | | |
|------|------|-------|--|----------------------|
| 2900 | 7300 | KURRU | VGSI and RNAV glidepath not coincident (VGSI Angle 3.25/TCH 23). | 5 NM Holding Pattern |
|------|------|-------|--|----------------------|



| CATEGORY | A | B | C | D |
|--------------|--------|-------------|--------------|--------------|
| LPV DA | | 2451-1 | 364 (400-1) | |
| LNAV/VNAV DA | | 2682-1½ | 595 (600-1½) | |
| LNAV MDA | 2760-¾ | 673 (700-¾) | 2760-1¾ | 673 (700-1¾) |
| CIRCLING | 2860-1 | 773 (800-1) | 2860-2¼ | 3080-3 |
| | | | 773 (800-2¼) | 993 (1000-3) |

| | |
|-----------|-----------|
| ELEV 2087 | TDZE 2087 |
|-----------|-----------|



MIRL Rwy 6-24 0
REIL Rwy 6 and 24 0