

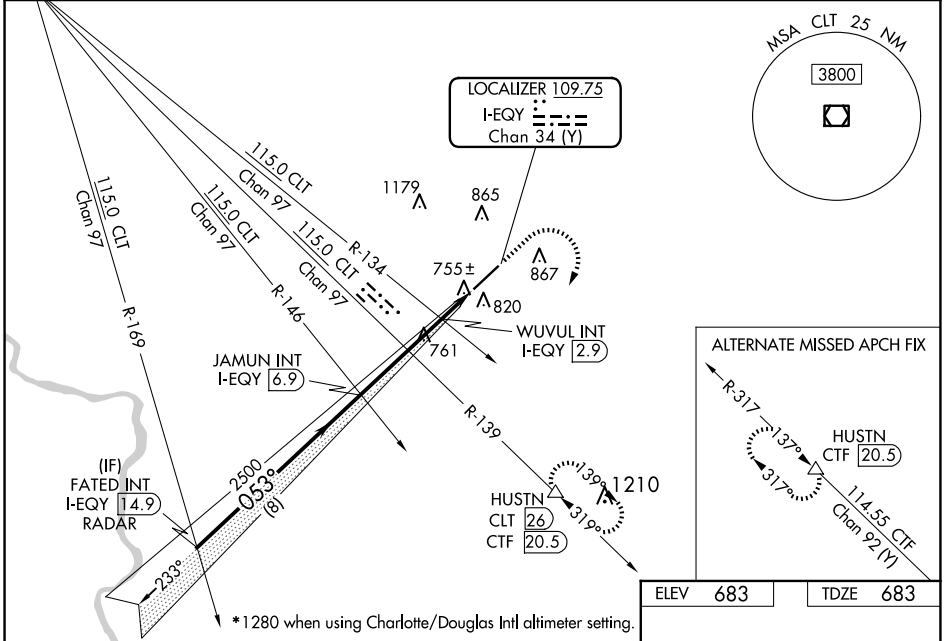
LOC/DME I-EQY 109.75 Chan 34 (Y)	APP CRS 053°	Rwy Idg TDZE Apt Elev	7001 683 683
--	------------------------	-----------------------------	---

ILS or LOC RWY 5

CHARLOTTE/MONROE EXEC (EQY)

DME required. RADAR required for procedure entry.	MALSR 	MISSED APPROACH: Climb to 1500 then climbing right turn to 3000 on heading 200° and on CLT VOR/DME R-139 to HUSTN/CLT 26 DME and hold, continue climb-in-hold to 3000.
Rwy 5 helicopter visibility reduction below 3/4 SM NA. Inop table does not apply to S-ILS 5 all Cats. For inop ALS, increase S-LOC 5 Cat A/B visibility and WUVUL fix minimums S-LOC 5 all Cats visibility to 1 SM.		

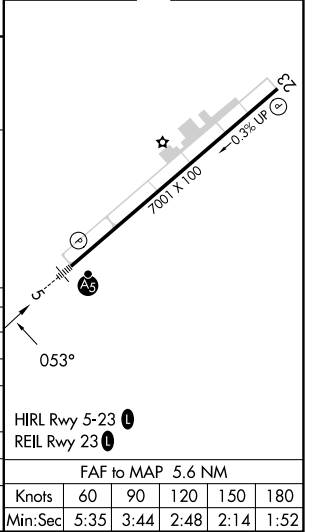
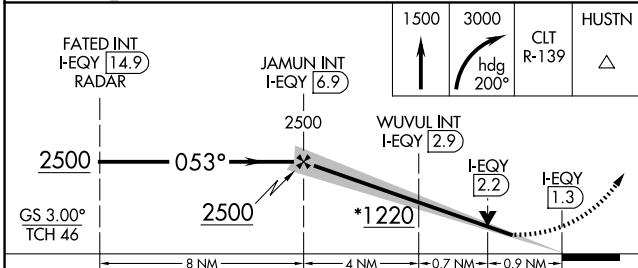
ASOS 135.775	CHARLOTTE APP CON 120.05 307.8	CLNC DEL 132.55	UNICOM 122.7 (CTAF)
------------------------	--	---------------------------	-------------------------------



SE-2, 20 MAR 2025 to 17 APR 2025

SE-2, 20 MAR 2025 to 17 APR 2025

ELEV 683	TDZE 683
----------	----------



CATEGORY	A	B	C	D
S-ILS 5	933-3/4 250 (300-3/4)			
S-LOC 5	1220-3/4	537 (600-3/4)	1220-1	537 (600-1)
CIRCLING	1220-1	537 (600-1)	1220-1 1/2 537 (600-1 1/2)	1480-2 1/2 797 (800-2 1/2)
WUVUL FIX MINIMUMS (DUAL VOR RECEIVERS OR DME REQUIRED)				
S-LOC 5	1020-3/4 337 (400-3/4)			
CIRCLING	1220-1	537 (600-1)	1220-1 1/2 537 (600-1 1/2)	1480-2 1/2 797 (800-2 1/2)

FAF to MAP 5.6 NM					
Knots	60	90	120	150	180
Min:Sec	5:35	3:44	2:48	2:14	1:52