

WAAS CH 58012 W27A	APP CRS 270°	Rwy ldg 5445 TDZE 588 Apt Elev 590
--	------------------------	--

RNAV (GPS) RWY 27

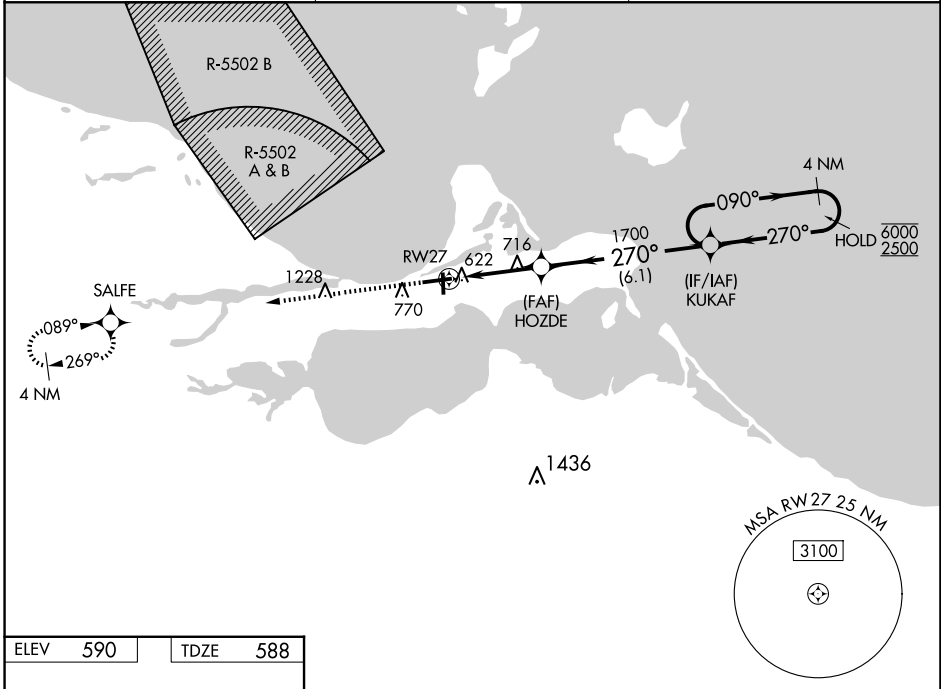
ERIE-OTTAWA INTL (PCW)

RNP APCH - GPS.

- ▼ Circling Rwy 18, 36 NA at night. Rwy 27 helicopter visibility reduction below 1 SM NA.
- ▲ For uncompensated Baro-VNAV systems, LNAV/VNAV NA below -16°C or above 54°C.

MISSED APPROACH:
Climb to 3000 direct
SALFE and hold.

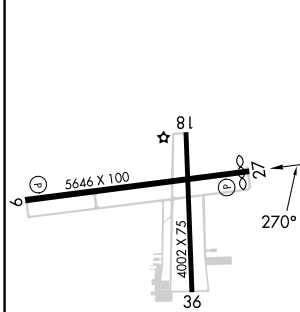
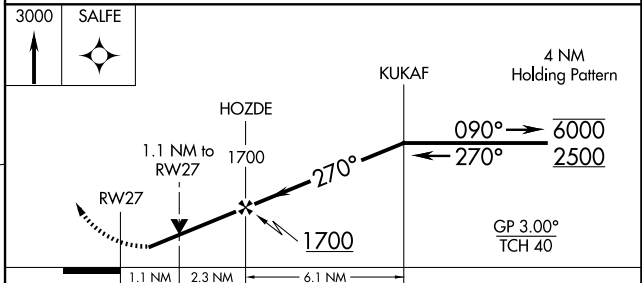
AWOS-3 118.775	CLEVELAND APP CON 126.35 346.325	UNICOM 122.8 (CTAF) 0
--------------------------	--	---------------------------------



EC-2, 20 MAR 2025 to 17 APR 2025

EC-2, 20 MAR 2025 to 17 APR 2025

ELEV 590	TDZE 588
----------	----------



CATEGORY	A	B	C	D
LPV DA		842-1	254 (300-1)	
LNAV/VNAV DA		969-1 1/8	381 (400-1 1/8)	
LNAV MDA	980-1	392 (400-1)	980-1 1/8	392 (400-1 1/8)
<input checked="" type="checkbox"/> CIRCLING	1140-1	550 (600-1)	1180-1 1/2 590 (600-1 1/2)	1580-3 990 (1000-3)

- HIRL Rwy 9-27 0
- MIRL Rwy 18-36 0
- REL Rwy 9 and 27 0