

WAAS CH <b>93616</b> <b>W17A</b>	APP CRS <b>171°</b>	Rwy Idg TDZE Apt Elev	<b>5705</b> <b>93</b> <b>101</b>
--	------------------------	-----------------------------	--

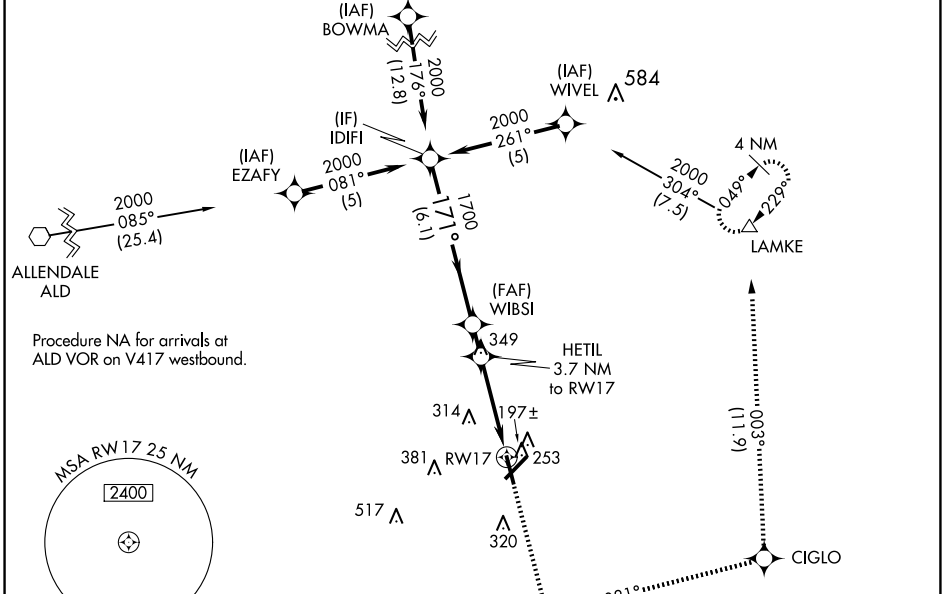
# RNAV (GPS) RWY 17

LOWCOUNTRY RGNL (R.B.W)

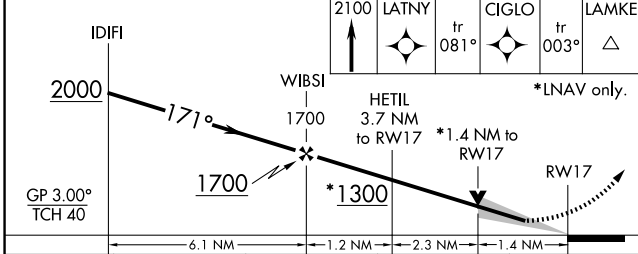
**⚠** For uncompensated Baro-VNAV systems, LNAV/VNAV NA below -15°C (5°F) or above 54°C (130°F). Baro-VNAV and VDP NA when using Charleston Intl/AFB altimeter setting.  
**⚠** DME/DME RNP-0.3 NA. When local altimeter setting not received, use Charleston AFB/Intl altimeter setting: increase LPV DA to 421 feet and LNAV/VNAV DA to 587 feet and all MDA 80 feet; increase LPV visibility all Cats 1/8 mile; increase LNAV/VNAV visibility all Cats, LNAV Cats C/D, and Circling Cat D visibility 1/4 mile; increase Circling Cat C visibility 1/2 mile.

**MISSED APPROACH:**  
 Climb to 2100 direct LATNY and on track 081° to CIGLO and track 003° to LAMKE and hold.

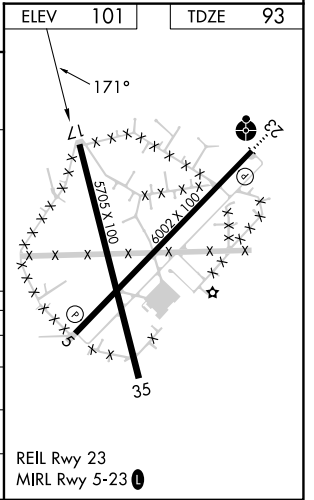
AWOS-3PT <b>118.725</b>	CHARLESTON APP CON <b>120.7 306.925</b>	UNICOM <b>122.8 (CTAF) 0</b>
----------------------------	--	---------------------------------



ELEV	101	TDZE	93
------	-----	------	----



CATEGORY	A	B	C	D
LPV DA	343-1 250 (300-1)			
LNAV/ VNAV DA	508-1 1/2		415 (500-1 1/2)	
LNAV MDA	580-1 487 (500-1)		580-1 3/8 487 (500-1 3/8)	
<b>C</b> CIRCLING	620-1 519 (600-1)	640-1 539 (600-1)	700-1 1/2 599 (600-1 1/2)	700-2 599 (600-2)



SE-2, 20 MAR 2025 to 17 APR 2025

SE-2, 20 MAR 2025 to 17 APR 2025