

|  |                        |  |             |
|--|------------------------|--|-------------|
| WAAS<br>CH <b>82232</b><br><b>W05A</b> | APP CRS<br><b>049°</b> | Rwy Idg<br>TDZE <b>96</b><br>Apt Elev <b>101</b> | <b>6002</b> |
|--|------------------------|--|-------------|

# RNAV (GPS) RWY 5

LOWCOUNTRY RGNL (R.B.W)

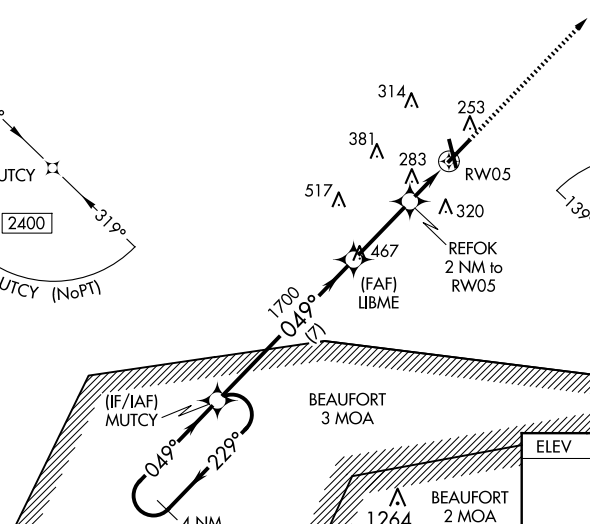
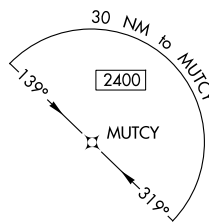
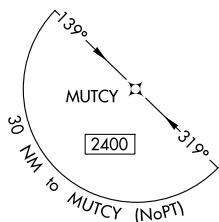
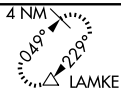
**⚠** For uncompensated Baro-VNAV systems, procedure NA below -15°C (5°F) or above 54°C (130°F).  
**⚠** DME/DME RNP-0.3 NA. VDP and Baro-VNAV NA when using Charleston AFB/Intl altimeter setting.  
 Helicopter visibility reduction below ¼ SM NA. When local altimeter setting not received, use Charleston AFB/Intl altimeter setting and increase all DA 78 feet and all MDA 80 feet; increase LPV, LNAV/VNAV all Cats and Circling Cat D visibility ¼ mile, increase LNAV Cat C - D visibility ½ mile, increase Circling Cat C visibility ½ mile.

**MISSED APPROACH:**  
 Climb to 2100 direct LAMKE and hold.

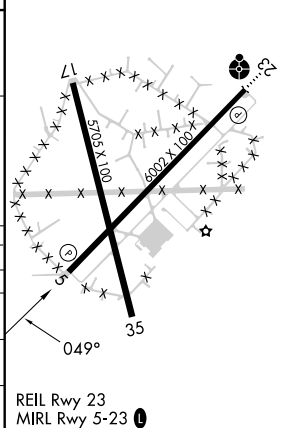
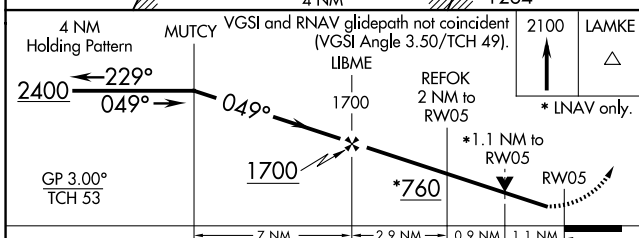
AWOS-3PT  
**118.725**

CHARLESTON APP CON  
**120.7 306.925**

UNICOM  
**122.8 (CTAF) 0**



|      |     |      |    |
|------|-----|------|----|
| ELEV | 101 | TDZE | 96 |
|------|-----|------|----|



| CATEGORY     | A                    | B                    | C                            | D                    |
|--------------|----------------------|----------------------|------------------------------|----------------------|
| LPV DA       |                      | 431-1 1/8            | 335 (400-1 1/8)              |                      |
| LNAV/VNAV DA |                      | 507-1 3/8            | 411 (500-1 3/8)              |                      |
| LNAV MDA     | 540-1                | 444 (500-1)          | 540-1 3/8                    | 444 (500-1 3/8)      |
| CIRCLING     | 620-1<br>519 (600-1) | 640-1<br>539 (600-1) | 700-1 1/2<br>599 (600-1 1/2) | 700-2<br>599 (600-2) |

REIL Rwy 23  
 MIRL Rwy 5-23 0

SE-2, 20 MAR 2025 to 17 APR 2025

SE-2, 20 MAR 2025 to 17 APR 2025