

WAAS CH <b>86536</b> <b>W09A</b>	APP CRS <b>094°</b>	Rwy Idg TDZE <b>32</b> Apt Elev <b>34</b>	<b>5000</b>
--	------------------------	---	-------------

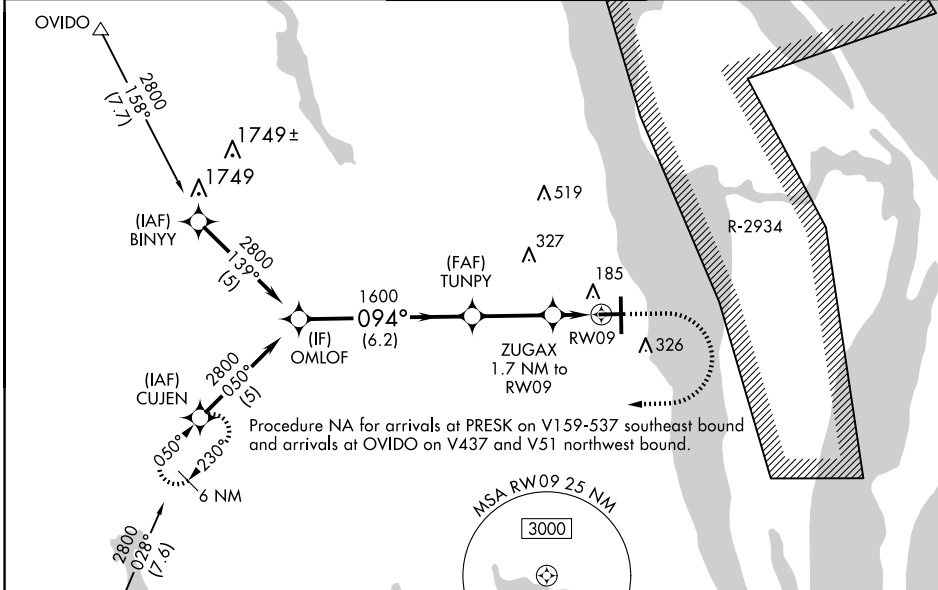
# RNAV (GPS) RWY 9

SPACE COAST RGNL (TIX)

**⚠** DME/DME RNP-0.3 NA. For uncompensated Baro-VNAV systems, LNAV/VNAV NA below -15°C (5°F) or above 46°C (115°F). When local altimeter setting not received, use Melbourne altimeter setting and increase all LPV DA to 352 feet, increase all LNAV/VNAV DA to 407 feet and all visibilities ¼ SM; increase all LNAV MDAs 60 feet and Cat C and D visibility ¼ SM. Rwy 9 helicopter visibility reduction below ¾ SM NA. VDP and Baro-VNAV NA when using Melbourne altimeter setting.

**MISSED APPROACH:** Climb to 800 then climbing right turn to 2800 direct CUJEN and hold.

ATIS <b>120.625</b>	ORLANDO APP CON <b>134.95 281.425</b>	SPACE COAST TOWER ★ <b>118.9 (CTAF) 0</b>	GND CON <b>121.85</b>	UNICOM <b>122.95</b>
------------------------	--	--	--------------------------	-------------------------

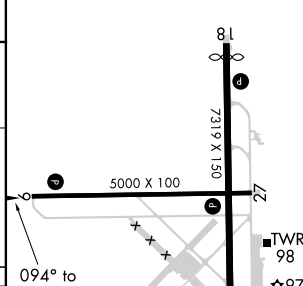
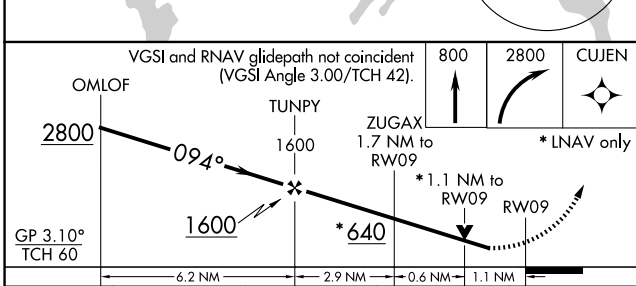


Procedure NA for arrivals at PRESK on V159-537 southeast bound and arrivals at OVIDO on V437 and V51 northwest bound.

SE-3, 20 MAR 2025 to 17 APR 2025

SE-3, 20 MAR 2025 to 17 APR 2025

ELEV 34	<b>D</b> TDZE 32
---------	------------------



CATEGORY	A	B	C	D
LPV DA		292-1	260 (300-1)	
LNAV/VNAV DA		347-1	315 (400-1)	
LNAV MDA	420-1	388 (400-1)	420-1 ½	388 (400-1 ½)
<b>C</b> CIRCLING	640-1	606 (700-1)	640-1 ¾	640-2
			606 (700-1 ¾)	606 (700-2)

MIRL Rwy 9-27 **0**  
HIRL Rwy 18-36 **0**  
REIL Rlys 9, 18, 27 **0**