

LOC I-AIZ <b>111.5</b>	APP CRS <b>217°</b>	Rwy Idg <b>6497</b>
		TDZE <b>869</b>
		Apt Elev <b>869</b>

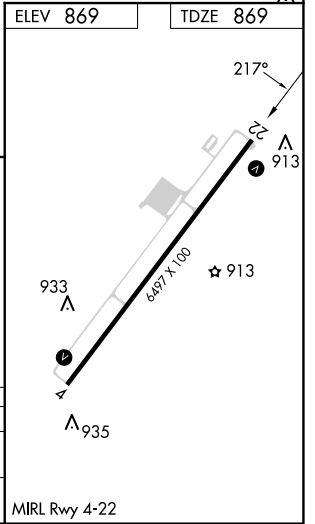
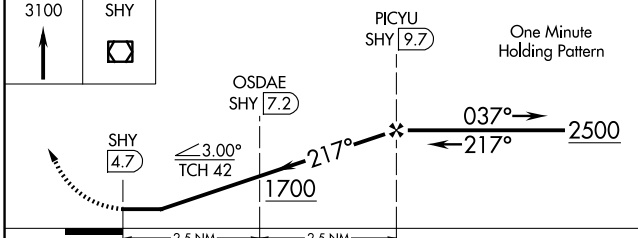
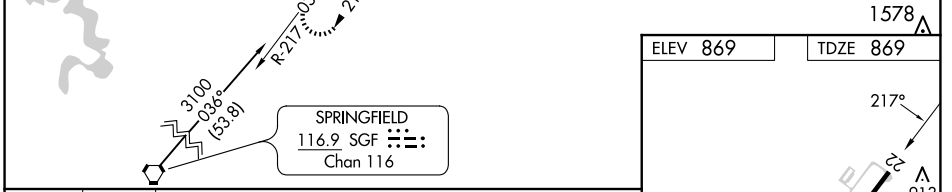
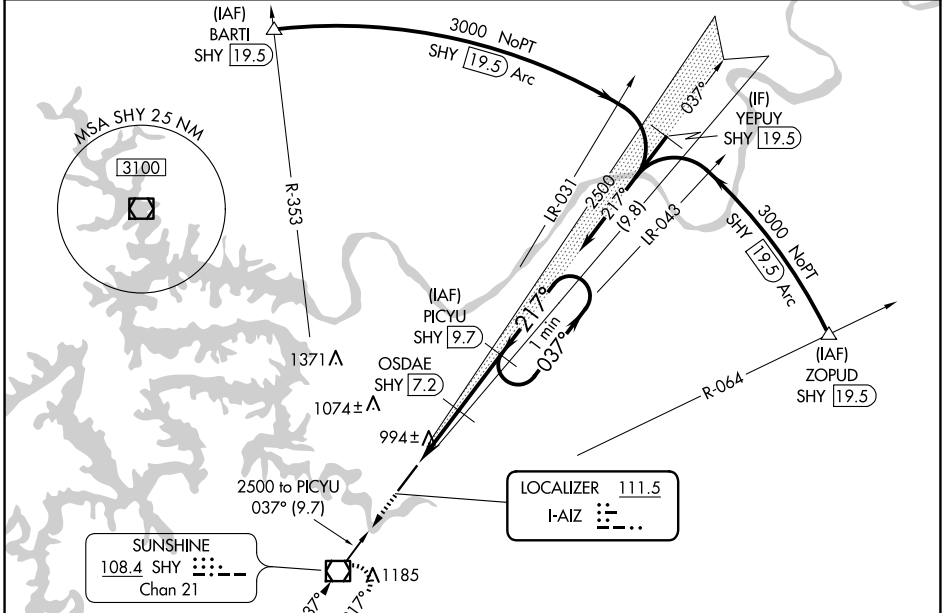
# LOC/DME RWY 22

LEE C FINE MEML (AIZ)

**NA** When local altimeter setting not received, use Camden ton altimeter setting and increase all MDAs 60 feet, increase S-22 Cat C and Circling Cat C visibility ¼ SM. Helicopter visibility reduction below 1 SM NA. DME from SHY VOR/DME. Simultaneous reception of I-AIZ and SHY VOR/DME required.

MISSED APPROACH: Climb to 3100 direct SHY VOR/DME and hold, continue climb-in-hold to 3100.

AWOS-3PT <b>135.325</b>	MIZZU APP CON <b>124.1 353.925</b>	UNICOM <b>122.8 (CTAF) 0</b>
----------------------------	---------------------------------------	---------------------------------



CATEGORY	A	B	C	D
S-22	1260-1	391 (400-1)	1260-1½ 391 (400-1½)	NA
CIRCLING	1320-1 451 (500-1)	1380-1 511 (600-1)	1440-1½ 571 (600-1½)	NA

NC-3, 20 MAR 2025 to 17 APR 2025

NC-3, 20 MAR 2025 to 17 APR 2025