

VOR/DME SHY <b>108.4</b> Chan 21	APP CRS <b>037°</b>	Rwy Idg <b>6497</b> TDZE <b>863</b> Apt Elev <b>869</b>
--	------------------------	---

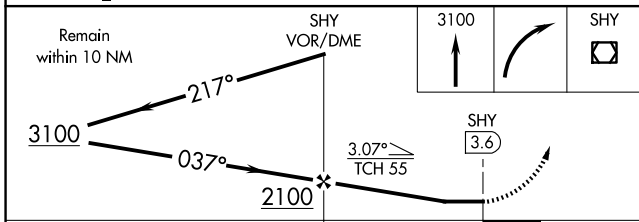
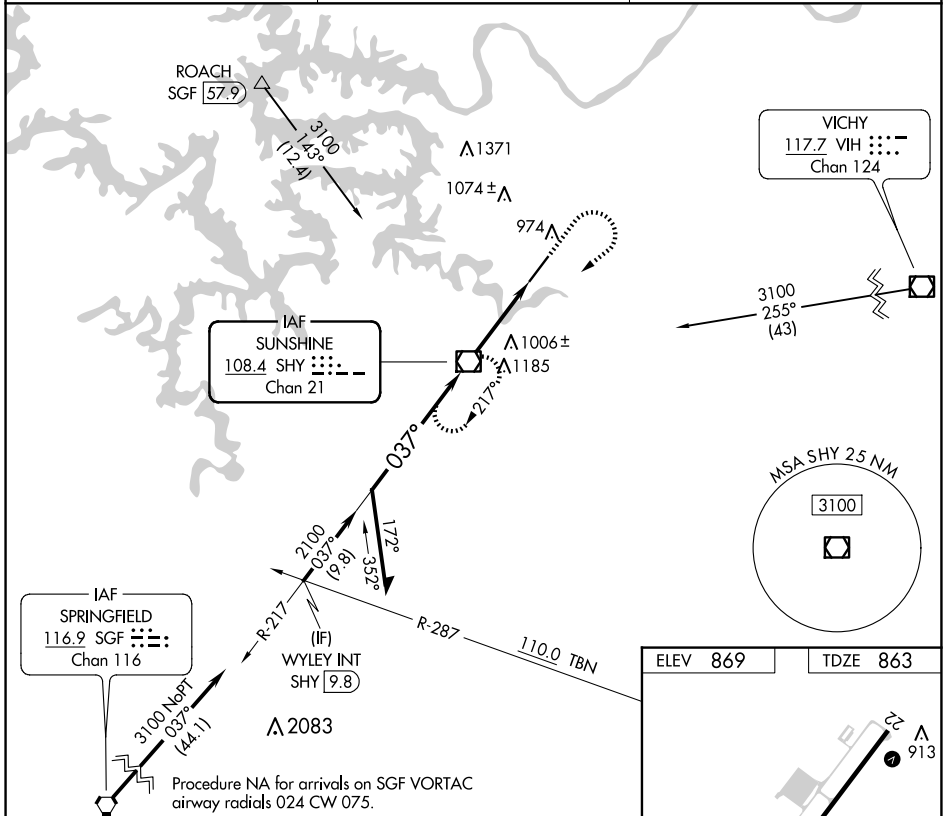
# VOR RWY 4

LEE C FINE MEML (AIZ)

**▼** Straight-in minimums NA at night. Helicopter visibility reduction below 1 SM NA.  
**▲** When local altimeter setting not received, use Camden ton altimeter setting and increase all MDAs 60 feet and S-4 Cat C and Circling Cat C visibility ¼ SM.

MISSED APPROACH: Climb to 3100 then right turn direct SHY VOR/DME and hold.

AWOS-3PT <b>135.325</b>	MIZZU APP CON <b>124.1 353.925</b>	UNICOM <b>122.8 (CTAF) 0</b>
----------------------------	---------------------------------------	---------------------------------



ELEV 869	TDZE 863
MIRL Rwy 4-22	
FAF to MAP 3.6 NM	
Knots	60 90 120 150 180
Min:Sec	3:36 2:24 1:48 1:26 1:12

CATEGORY	A	B	C	D
S-4	1260-1	397 (400-1)	1260-1½ 397 (400-1½)	NA
CIRCLING	1320-1 451 (500-1)	1380-1 511 (600-1)	1440-1½ 571 (600-1½)	NA

NC-3, 20 MAR 2025 to 17 APR 2025

NC-3, 20 MAR 2025 to 17 APR 2025