

LOC I-BZQ <b>111.5</b>	APP CRS <b>320°</b>	Rwy Idg TDZE Apt Elev	<b>5701</b> <b>179</b> <b>187</b>
---------------------------	------------------------	-----------------------------	---

# ILS or LOC RWY 32

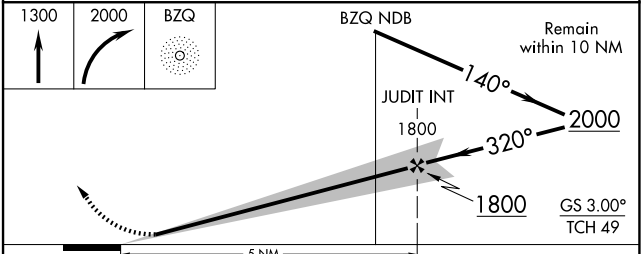
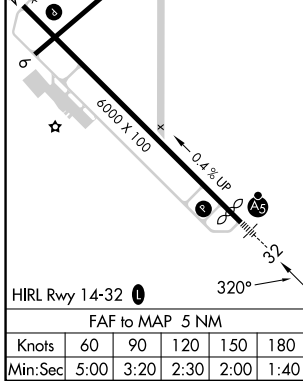
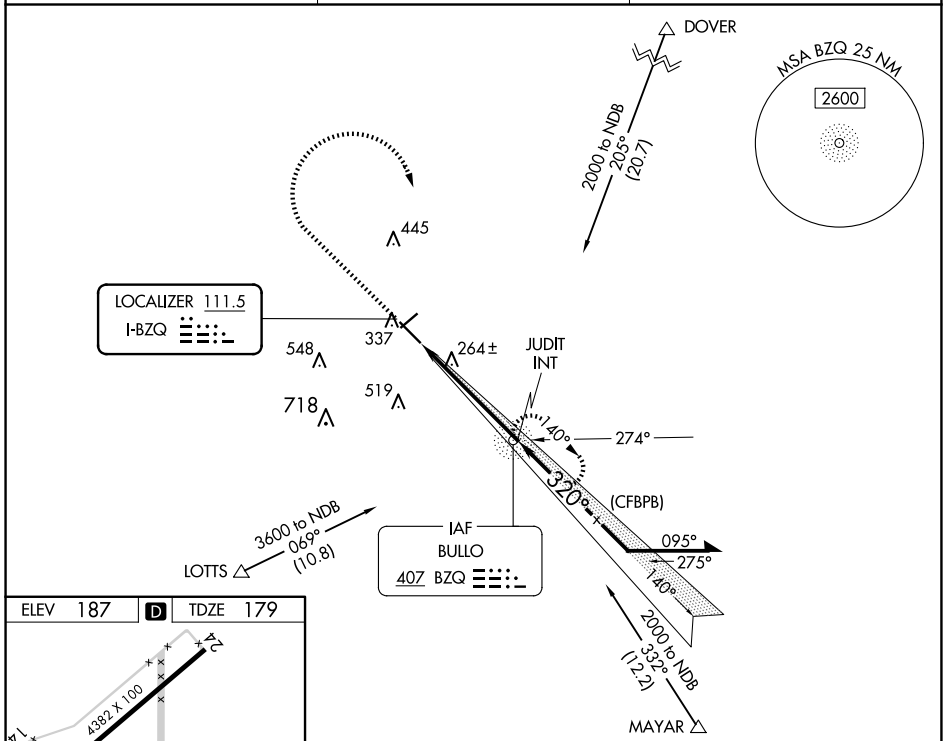
STATESBORO-BULLOCH COUNTY (TBR)

ADF required.

▼ Circling to Rwy 6, 24 NA at night. When local altimeter setting not received, use JYL altimeter setting and increase S-ILS 32 DA to 408 feet; increase all MDAs 40 feet; and Circling visibility Cat C ¼ SM. For inop ALS, increase S-LOC 32 Cat C and D visibility to 1 SM.

MALSR MISSED APPROACH: Climb to 1300 then climbing right turn to 2000 direct BZQ NDB and hold.

AWOS-3 <b>119.025</b>	SAVANNAH APP CON ★ <b>118.4 354.0</b>	UNICOM <b>122.725 (CTAF) 0</b>
--------------------------	--	-----------------------------------



CATEGORY	A	B	C	D
S-ILS 32	379-½ 200 (200-½)			
S-LOC 32	520-½	341 (400-½)	520-⅝	341 (400-⅝)
<input checked="" type="checkbox"/> CIRCLING	640-1 453 (500-1)	740-1 553 (600-1)	840-1¾ 653 (700-1¾)	860-2¼ 673 (700-2¼)

SE-4, 20 MAR 2025 to 17 APR 2025

SE-4, 20 MAR 2025 to 17 APR 2025