


WAAS CH 82013	APP CRS 133°	Rwy Idg TDZE Apt Elev	7000 1031 1031
W13A			

RNAV (GPS) RWY 13

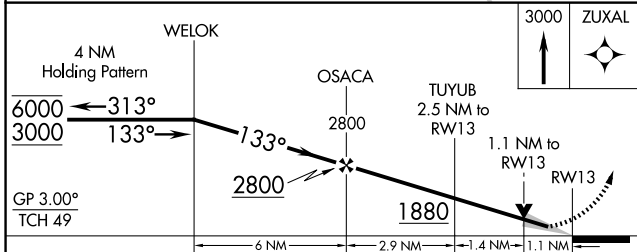
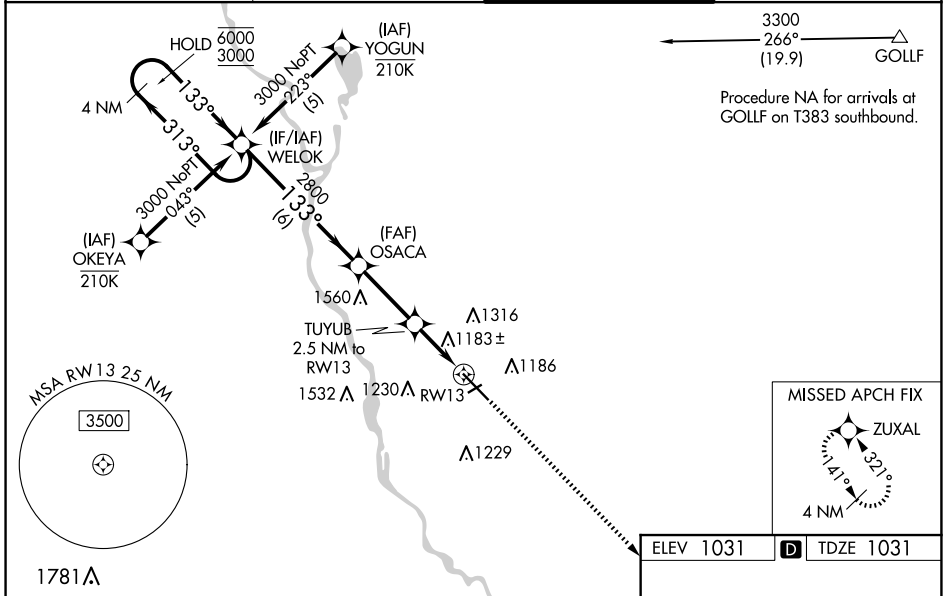
ST CLOUD RGNL (STC)

RNP APCH - GPS.

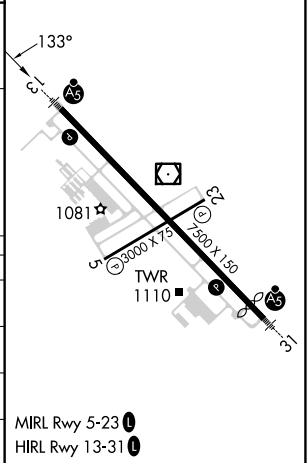
⚠ Baro-VNAV and VDP NA when using Little Falls altimeter setting. For uncompensated Baro-VNAV systems, LNAV/VNAV NA below -21°C or above 54°C. When local altimeter setting not received, use Little Falls altimeter setting, increase LPV DA to 1307 feet; increase LNAV/VNAV DA to 1516 feet and all visibilities ¼ SM; increase all MDAs 80 feet and LNAV visibility Cat C and D ¼ SM, and Circling visibility Cat C and D ¼ SM. For inop ALS, increase LNAV/VNAV visibility all Cats and LNAV Cat C and D visibility to 1½ SM. When local altimeter not received and ALS inop, increase LPV visibility all Cats to ¾ SM, LNAV/VNAV visibility all Cats and LNAV Cat C and D to 1¾ SM.

MALSR  **MISSED APPROACH:** Climb to 3000 direct ZUXAL and hold.

ATIS 119.375	MINNEAPOLIS CENTER 121.05 235.775	ST. CLOUD TOWER * 118.25 (CTAF) 0	GND CON 123.75
-------------------------------	--	--	---------------------------------



CATEGORY	A	B	C	D
LPV DA		1231-½	200 (200-½)	
LNAV/VNAV DA		1440-¾	409 (500-¾)	
LNAV MDA	1440-½	409 (500-½)	1440-¾	409 (500-¾)
CIRCLING	1500-1	469 (500-1)	1620-1½ 589 (600-1½)	1860-2¾ 829 (900-2¾)



NC-1, 20 MAR 2025 to 17 APR 2025

NC-1, 20 MAR 2025 to 17 APR 2025