

WAAS CH <b>61037</b> <b>W14A</b>	APP CRS <b>137°</b>	Rwy Idg TDZE Apt Elev	<b>4320</b> <b>2589</b> <b>2595</b>
--	------------------------	-----------------------------	---

# RNAV (GPS) RWY 14

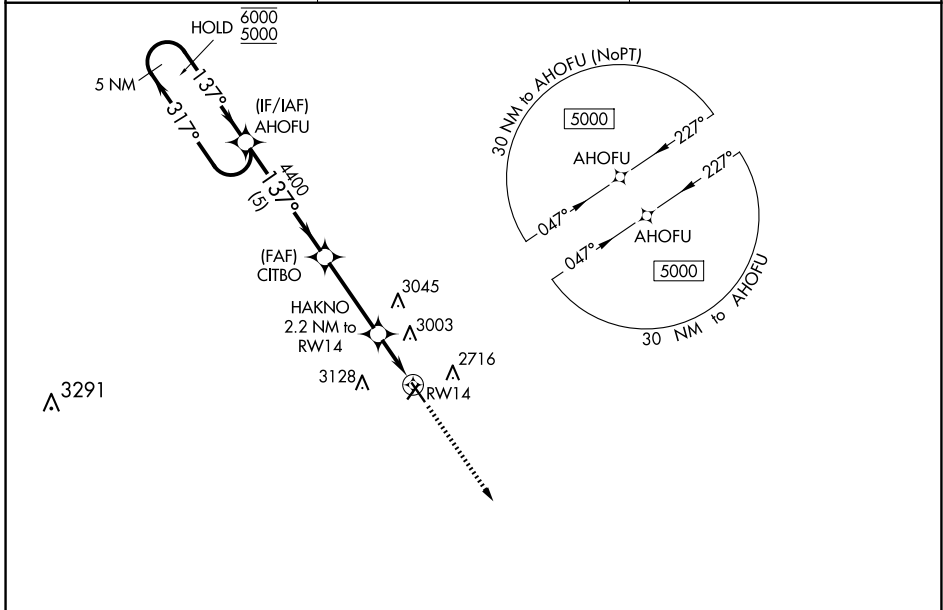
MILLER FLD (VTN)

RNP APCH.

**⚠** For uncompensated Baro-VNAV systems, LNAV/VNAV NA below -25°C or above 54°C .  
Rwy 14 helicopter visibility reduction below ¾ SM NA.

MISSED APPROACH:  
Climb to 5000 direct  
GIYIT and hold.

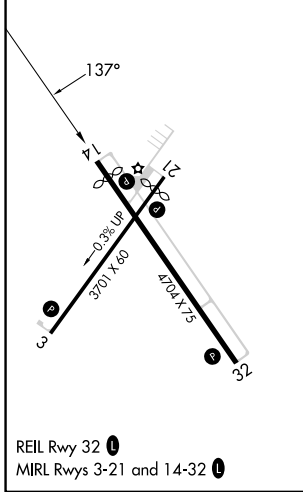
ASOS <b>118.075</b>	DENVER CENTER <b>127.95 338.2</b>	UNICOM <b>122.8 (CTAF) 0</b>
------------------------	--------------------------------------	---------------------------------



NC-2, 20 MAR 2025 to 17 APR 2025

NC-2, 20 MAR 2025 to 17 APR 2025

ELEV 2595	TDZE 2589
-----------	-----------



REIL Rwy 32 **0**  
MIRL Rwy 3-21 and 14-32 **0**



	5 NM Holding Pattern	AHOFU	CITBO	HAKNO 2.2 NM to RWY 14	5000	GIYIT
	6000 ← 317°	4400	4400	*1.7 NM to RWY 14	↑	✧
	5000 → 137°			*3320		
	GP 3.00° TCH 40					
		5 NM	3.4 NM	0.5	1.7 NM	
CATEGORY	A	B	C	D		
LPV DA	2861-1	272 (300-1)		NA		
LNAV/VNAV DA	3239-2¼	650 (700-2¼)		NA		
LNAV MDA	3160-1	571 (600-1)		NA		
<b>C</b> CIRCLING	3160-1 565 (600-1)	3560-1½ 965 (1000-1½)		NA		