

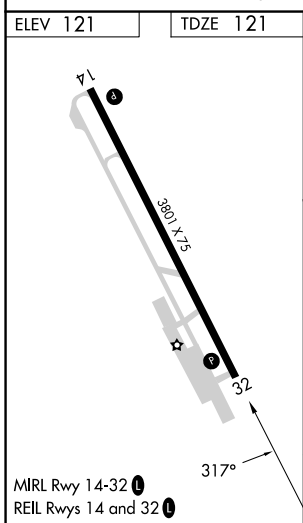
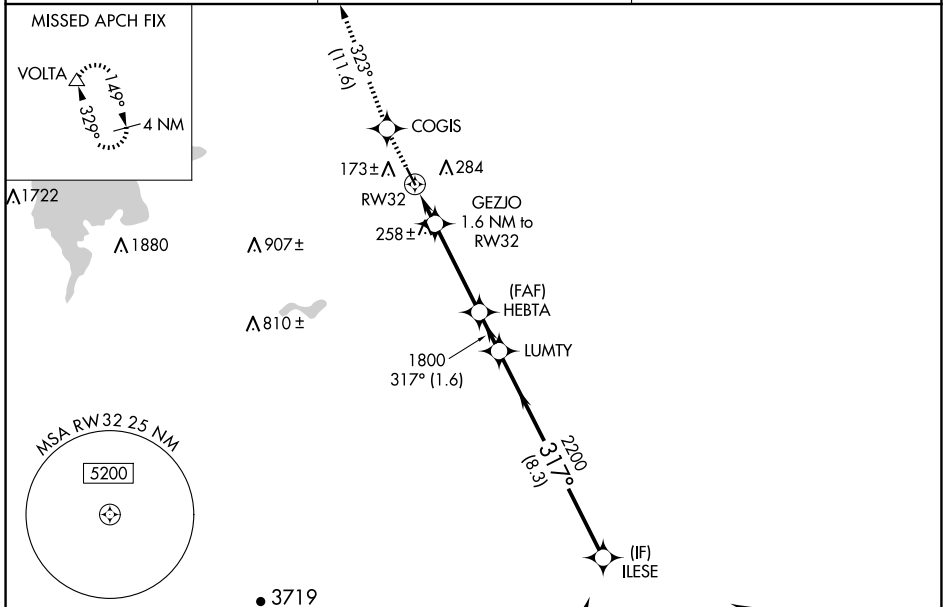
|                        |                        |
|------------------------|------------------------|
| APP CRS<br><b>317°</b> | Rwy Idg<br><b>3801</b> |
|                        | TDZE<br><b>121</b>     |
|                        | Apt Elev<br><b>121</b> |

# RNAV (GPS) RWY 32

LOS BANOS MUNI (LSN)

|           |   |   |
|-----------|---|---|
| RNP APCH. | <p>▼ Rwy 32 helicopter visibility reduction below 3/4 SM NA. VDP NA when using Merced Yosemite Rgnl altimeter setting. When local altimeter setting not received, use Merced Yosemite Rgnl altimeter setting and increase all MDA 60 feet, and all visibility 1/4 SM.</p> <p>▲ NA</p> | <p>MISSED APPROACH: Climb to 3000 direct COGIS and on track 323° to VOLTA and hold.</p> |
|-----------|---|---|

|                          |  |                                 |
|--------------------------|--|---------------------------------|
| AWOS-3<br><b>118.675</b> | NORCAL APP CON<br><b>120.95 269.45</b> | UNICOM<br><b>122.8 (CTAF) 0</b> |
|--------------------------|--|---------------------------------|



|          |                                    |             |                           |
|----------|------------------------------------|-------------|---------------------------|
| 3000     | COGIS                              | VOLTA       | ILESE                     |
| ↑        | fr 323°                            | △           |                           |
|          | GEZJO 1.6 NM to RW32               | LUMTY       |                           |
|          | RW32 1.1 NM to RW32                | HEBTA       |                           |
|          | 3.00° TCH 38                       | 1800        | 2200                      |
|          | 680                                | 317°        | 3600                      |
|          | 1.1 NM 0.5 NM 3.6 NM 1.6 NM 8.3 NM |             |                           |
| CATEGORY | A                                  | B           | C D                       |
| LNAV MDA | 520-1                              | 399 (400-1) | 520-1 1/8 399 (400-1 1/8) |

SW-2, 20 MAR 2025 to 17 APR 2025

SW-2, 20 MAR 2025 to 17 APR 2025