

WAAS CH 93630 W18A	APP CRS 179°	Rwy Idg 4002 TDZE 538 Apt Elev 538
--	------------------------	---

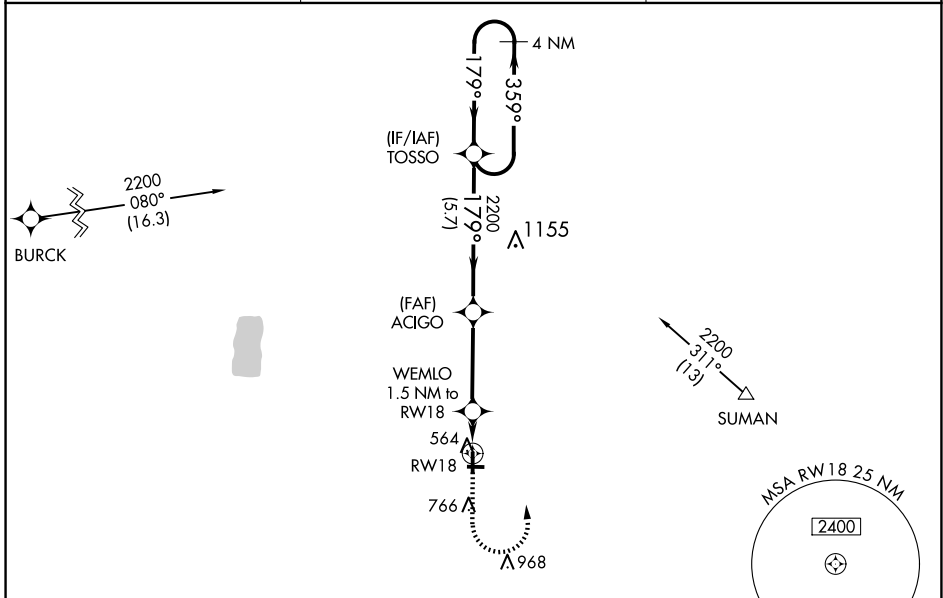
RNAV (GPS) RWY 18

SPARTA COMMUNITY-HUNTER FLD (SAR)

⚠ NA Baro-VNAV NA when using Scott AFB/Midamerica St Louis altimeter setting. For uncompensated Baro-VNAV systems, LNAV/VNAV NA below -16°C (4°F) or above 54°C (130°F). DME/DME RNP-0.3 NA. Helicopter visibility reduction below ¾ SM NA. When local altimeter setting not received, use Scott AFB/Midamerica St Louis altimeter setting and increase all DA 68 feet and all MDA 80 feet, increase LNAV and circling Cat C/D visibility ¼ mile. Circling NA to Rwy 9/27.

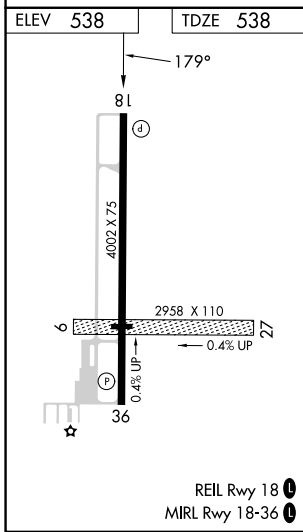
MISSED APPROACH: Climb to 1200 then climbing left turn to 2200 direct TOSSO and hold.

AWOS-3PT 118,375	ST. LOUIS APP CON 125.2 281.5	UNICOM 123,075 (CTAF) 0
----------------------------	---	-----------------------------------



EC-3, 20 MAR 2025 to 17 APR 2025

EC-3, 20 MAR 2025 to 17 APR 2025



Limit missed approach to 250K.

1200	2200	TOSSO	VGSI and RNAV glidepath not coincident (VGSI Angle 3.00/TCH 20).	4 NM Holding Pattern
*LNAV only	WEMLO 1.5 NM to RWY 18	ACIGO 2200	TOSSO	
1.5 NM	3.6 NM	5.7 NM		
CATEGORY	A	B	C	D
LPV DA		788-1	250 (300-1)	
LNAV/VNAV DA		788-1	250 (300-1)	
LNAV MDA		880-1	342 (400-1)	
CIRCLING	980-1 442 (500-1)	1140-1 602 (700-1)	1140-1¾ 602 (700-1¾)	1320-2½ 782 (800-2½)

GP 3.00° TCH 55