

WAAS CH <b>78038</b> <b>W04A</b>	APP CRS <b>046°</b>	Rwy Idg TDZE Apt Elev	<b>4003</b> <b>420</b> <b>421</b>
----------------------------------------	------------------------	-----------------------------	-----------------------------------------

# RNAV (GPS) RWY 4

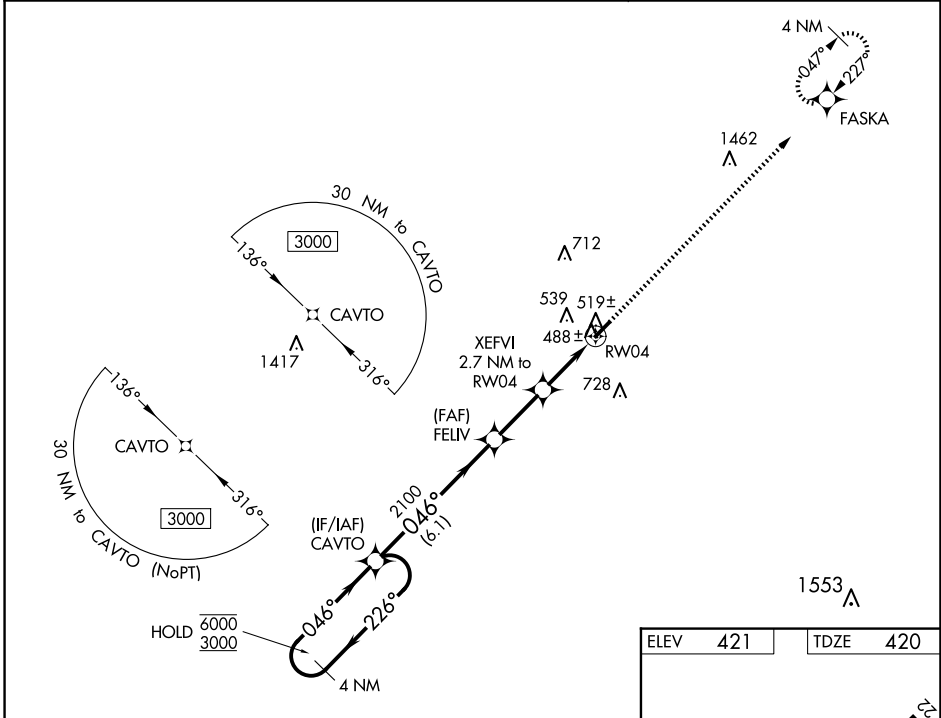
HUMBOLDT MUNI (M53)

RNP APCH - GPS.

**⚠** Rwy 4 helicopter visibility reduction below 1 SM NA. Use Jackson altimeter setting, when not received, use Dyersburg altimeter setting; increase all MDA 60 feet; increase LP Cats C/D visibility 1/8 mile; increase LNAV Cats C/D and Circling Cats C/D visibility 1/4 mile. Straight-in Rwy 4 NA at night, Circling Rwy 4 NA at night.

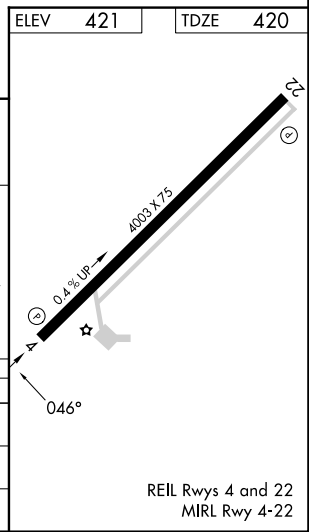
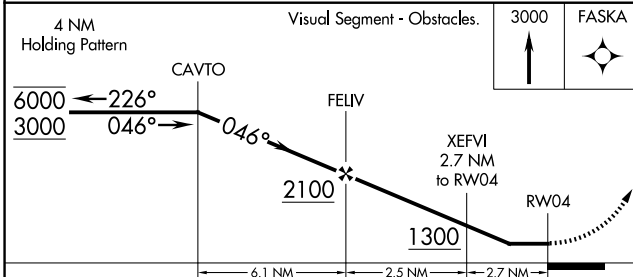
**MISSED APPROACH:**  
Climb to 3000 direct FASKA and hold.

MKL ASOS <b>119.325</b>	MEMPHIS CENTER <b>134.65 316.15</b>	UNICOM <b>122.8 (CTAF)</b>
----------------------------	----------------------------------------	-------------------------------



SE-1, 20 MAR 2025 to 17 APR 2025

SE-1, 20 MAR 2025 to 17 APR 2025



CATEGORY	A	B	C	D
LP MDA	780-1 360 (400-1)			
LNAV MDA	800-1 380 (400-1)			
<b>C</b> CIRCLING	900-1 479 (500-1)	920-1 499 (500-1)	1120-2 699 (700-2)	1120-2 1/4 699 (700-2 1/4)