

LOC/DME I-RVT <b>111.15</b> Chan <b>48</b> (Y)	APP CRS <b>002°</b>	Rwy Idg <b>8003</b> TDZE <b>261</b> Apt Elev <b>264</b>
--	------------------------	---

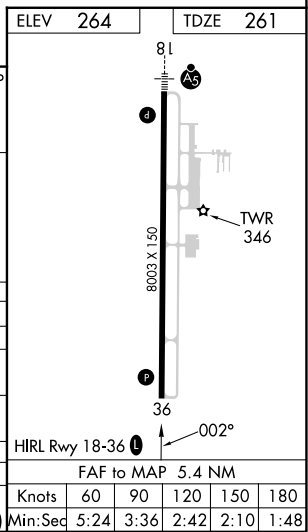
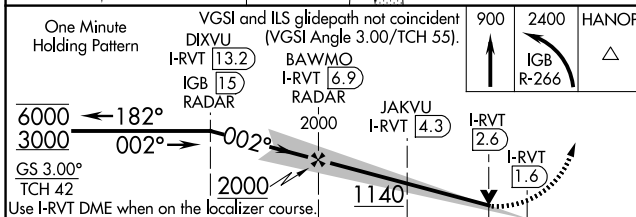
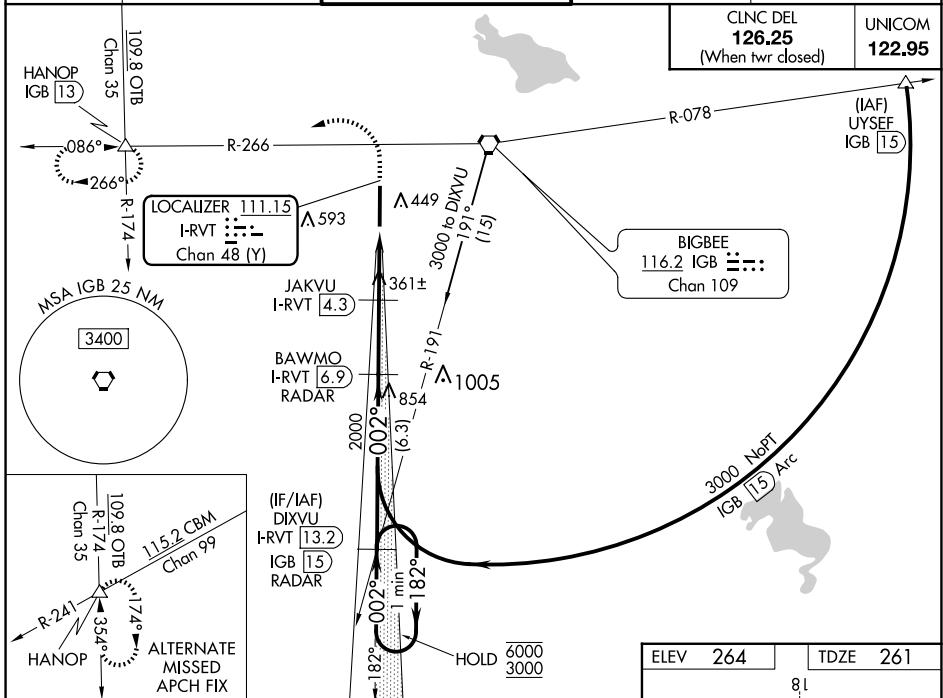
# ILS or LOC RWY 36

GOLDEN TRIANGLE RGNL (GTR)

DME or RADAR required.

**▲** MISSED APPROACH: Climb to 900 then climbing left turn to 2400 on IGB VORTAC R-266 to HANOP INT/IGB VORTAC 13 DME and hold.

ATIS <b>126.375</b>	COLUMBUS APP CON* <b>135.6 323.275</b>	GOLDEN TRIANGLE TOWER* <b>118.2 (CTAF) 0 298.875</b>	GND CON <b>135.375 322.475</b>	CLNC DEL <b>135.375 322.475</b>
------------------------	---	---	-----------------------------------	------------------------------------



One Minute Holding Pattern	VGSI and ILS glidepath not coincident (VGSI Angle 3.00°/TCH 55').	900	2400	HANOP
I-RVT 13.2	BAWMO I-RVT 6.9	IGB R-266		
IGB 15 RADAR	JAKVU I-RVT 4.3			
	I-RVT 2.6			
	I-RVT 1.6			
Use I-RVT DME when on the localizer course.				
CATEGORY	A	C	D	E
S-ILS 36		461-3/4	200 (200-3/4)	
S-LOC 36	1140-1 1/4	879 (900-1 1/4)	1140-2 1/2	879 (900-2 1/2)
<b>C</b> CIRCLING	1140-1 1/4	876 (900-1 1/4)	1140-2 1/2	876 (900-2 1/2)
			876 (900-2 3/4)	876 (900-3)
JAKVU FIX MINIMUMS				
S-LOC 36		620-1	359 (400-1)	
<b>C</b> CIRCLING	760-1	496 (500-1)	960-2	960-2 1/4
			696 (700-2)	696 (700-2 1/4)
			960-2 1/2	696 (700-2 1/2)
FAF to MAP 5.4 NM				
Knots	60	90	120	150
Min:Sec	5:24	3:36	2:42	2:10

SC-4, 20 MAR 2025 to 17 APR 2025

SC-4, 20 MAR 2025 to 17 APR 2025