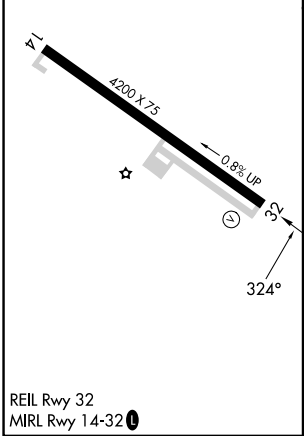
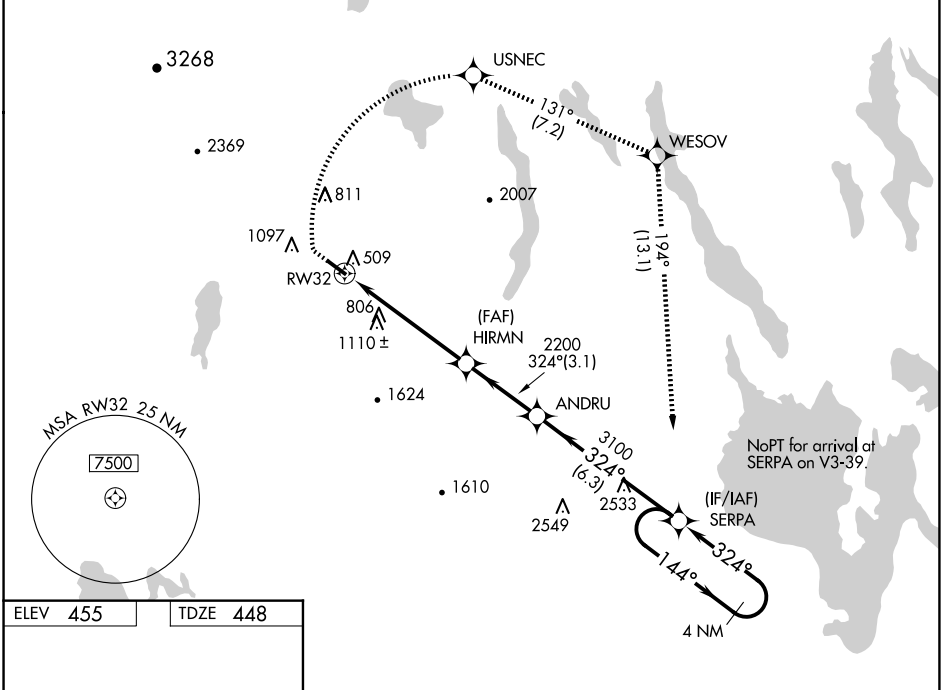


WAAS CH 93635	APP CRS 324°	Rwy Idg 4200
W32A	TDZE 448	Apt Elev 455

RNAV (GPS) RWY 32

EASTERN SLOPES RGNL (IZG)

RNP APCH.		MISSED APPROACH: Climb to 1040 then climbing right turn to 3600 direct USNEC and on track 131° to WESOV and on track 194° to SERPA and hold.
<p>When local altimeter setting not received, use Auburn/Lewiston altimeter setting and increase all DA to 1005 feet and increase LPV all Cats visibility $\frac{1}{4}$ SM; increase all MDA 100 feet, and increase LNAV Cat B visibility $\frac{1}{4}$ SM and Cat C visibility $\frac{1}{2}$ SM, and increase Circling Cat B visibility $\frac{1}{4}$ SM. Rwy 32 helicopter visibility reduction below $\frac{3}{4}$ SM NA. VDP NA when using Auburn/Lewiston altimeter setting. Circling to Rwy 14 NA at night.</p>		
ASOS 135.775	PORTLAND APP CON * 119.75 269.35	UNICOM 122.8 (CTAF)



ELEV 455	TDZE 448	1040		3600	USNEC	tr 131°	WESOV	tr 194°	SERPA	VGSI and RNAV glidepath not coincident (VGSI Angle 3.00/TCH 17).
<p>*LNAV only.</p> <p>4 NM SERPA Holding Pattern</p> <p>144° → 3600</p> <p>← 324°</p> <p>GP 3.00° TCH 51</p> <p>2.2 NM 3.2 NM 3.1 NM 6.3 NM</p>										
CATEGORY	A	B	C	D						
LPV DA	914-1 $\frac{3}{8}$		466 (500-1 $\frac{3}{8}$)		NA					
LNAV MDA	1140-1		692 (700-1)		1140-2		692 (700-2)		NA	
CIRCLING	1340-1 $\frac{1}{4}$		1400-1 $\frac{1}{4}$		1560-3		1105 (1200-3)		NA	

NE-1, 20 MAR 2025 to 17 APR 2025

NE-1, 20 MAR 2025 to 17 APR 2025