

LOC I-HSA	APP CRS	Rwy Idg	8498
110.35	182°	TDZE	23
		Apt Elev	23

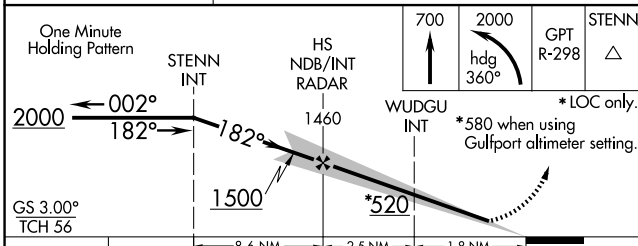
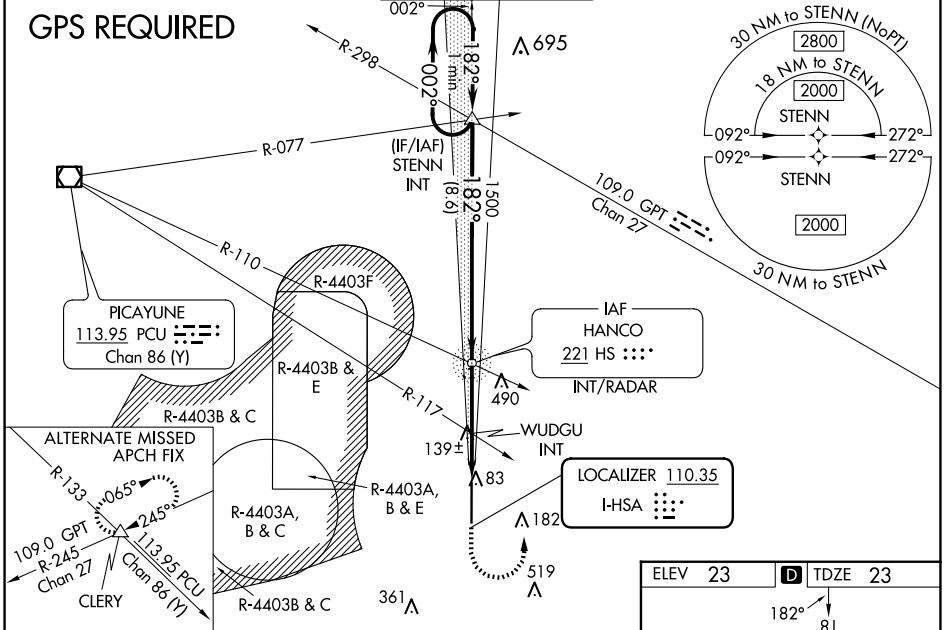
ILS Y or LOC Y RWY 18

STENNIS INTL (HSA)

▲ Circling NA for Cat E west of Rwy 18-36. When local altimeter setting not received, use Gulfport altimeter setting; increase DA to 270 feet; increase all MDA 60 feet and S-LOC 18 Cats C/D/E visibility 1/8 mile, Circling Cat C visibility 1/4 mile and Cats D/E visibility 1/4 mile. WUDGU fix minimums: increase S-LOC 18 Cats C/D/E visibility 1/8 mile, and Circling Cats D/E visibility 1/4 mile. For inop MALS, increase S-ILS 18 Cat E visibility to 3/4 mile, and S-LOC 18 Cats C/D/E visibility to 1 1/8 mile. WUDGU fix minimums: increase S-LOC 18 Cats C/D/E visibility to 1 mile. For inop MALS when using Gulfport altimeter setting, increase S-ILS 18 Cat E visibility to 3/4 mile and S-LOC 18 Cat E visibility to 1 1/8 mile. WUDGU fix minimums: increase S-LOC 18 Cat E visibility to 1 1/4 mile.

MISSED APPROACH: Climb to 700 then climbing left turn to 2000 on heading 360° and on GPT VORTAC R-298 to STENN and hold.

AWOS-3PT 118.375	GULFPORT APP CON* 124.6 354.1 (130°-309°) 127.5 254.25 (310°-129°)	STENNIS TOWER* 127.15 (CTAF) 229.4	GND CON 121.725 229.4	UNICOM 122.95
----------------------------	--	---	---------------------------------	-------------------------



ELEV 23	TDZE 23												
<table border="1"> <thead> <tr> <th>REIL Rwy 36</th> <th>HIRL Rwy 18-36</th> </tr> </thead> <tbody> <tr> <td>60</td> <td>4:18</td> </tr> <tr> <td>90</td> <td>2:52</td> </tr> <tr> <td>120</td> <td>2:09</td> </tr> <tr> <td>150</td> <td>1:43</td> </tr> <tr> <td>180</td> <td>1:26</td> </tr> </tbody> </table>		REIL Rwy 36	HIRL Rwy 18-36	60	4:18	90	2:52	120	2:09	150	1:43	180	1:26
REIL Rwy 36	HIRL Rwy 18-36												
60	4:18												
90	2:52												
120	2:09												
150	1:43												
180	1:26												
FAF to MAP 4.3 NM													

CATEGORY	A	B	C	D	E
S-ILS 18	223-1/2 200 (200-1/2)				
S-LOC 18	520-1/2	497 (500-1/2)	520-1 497 (500-1)		
C CIRCLING	520-1	497 (500-1)	520-1 1/2	820-2 1/2	820-2 3/4
WUDGU FIX MINIMUMS (DUAL VOR RECEIVERS REQUIRED)					
S-LOC 18	400-1/2	377 (400-1/2)	400-5/8 377 (400-5/8)		
C CIRCLING	480-1	457 (500-1)	520-1 1/2	820-2 1/2	820-2 3/4
			497 (500-1 1/2)	797 (800-2 1/2)	797 (800-2 3/4)

SC-4, 20 MAR 2025 to 17 APR 2025

SC-4, 20 MAR 2025 to 17 APR 2025