

WAAS CH <b>63109</b> <b>W36A</b>	APP CRS <b>002°</b>	Rwy Idg <b>8498</b> TDZE <b>15</b> Apt Elev <b>23</b>
----------------------------------------	------------------------	-------------------------------------------------------------

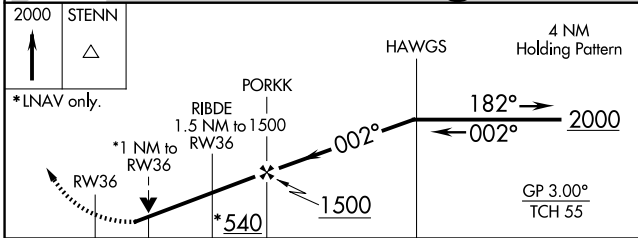
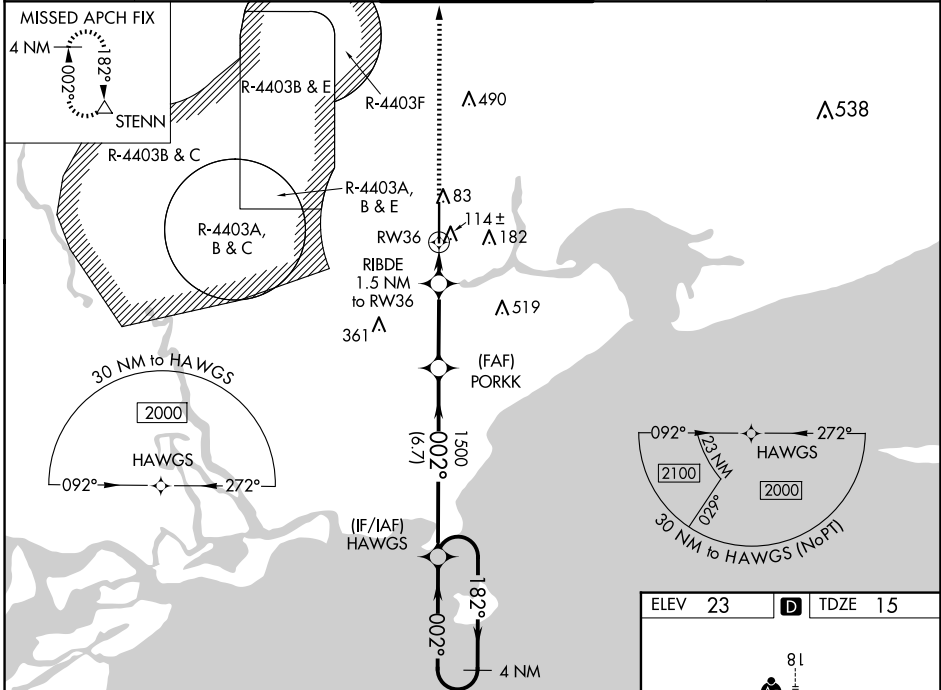
# RNAV (GPS) RWY 36

STENNIS INTL (HSA)

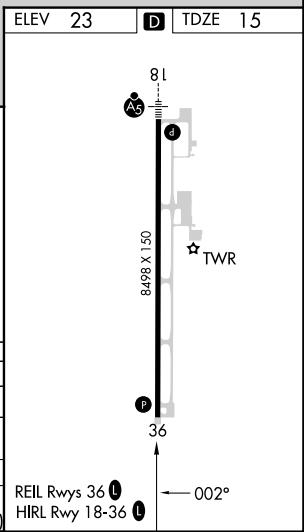
**⚠** For uncompensated Baro-VNAV systems, LNAV/VNAV NA below -15°C (5°F) or above 54°C (130°F). Circling NA for Cat E West of Rwy 18-36. DME/DME RNP-0.3 NA. Helicopter visibility reduction below 3/4 SM NA. Baro-VNAV and VDP NA when using Gulfport altimeter setting. When local altimeter setting not received, use Gulfport altimeter setting and increase LPV DA to 332 feet and LNAV/VNAV DA to 344 feet and all MDA 60 feet; increase LPV and LNAV/VNAV all Cats visibility 1/8 mile and LNAV Cats C/D/E and Circling Cats D/E visibility 1/4 mile.

MISSED APPROACH: Climb to 2000 direct STENN and hold.

AWOS-3PT <b>118.375</b>	GULFPORT APP CON ★ <b>124.6 354.1</b> (130°-309°) <b>127.5 254.25</b> (310°-129°)	STENNIS TOWER ★ <b>127.15</b> (CTAF) <b>0 229.4</b>	GND CON <b>121.725 229.4</b>	UNICOM <b>122.95</b>
----------------------------	-----------------------------------------------------------------------------------------	--------------------------------------------------------	---------------------------------	-------------------------



CATEGORY	A	B	C	D	E
LPV DA		285-7/8	270 (300-7/8)		
LNAV/VNAV DA		297-7/8	282 (300-7/8)		
LNAV MDA		380-1	365 (400-1)		
<b>CIRCLING</b>	480-1	457 (500-1)	520-1 1/2 497 (500-1 1/2)	820-2 1/2 797 (800-2 1/2)	820-2 3/4 797 (800-2 3/4)



SC-4, 20 MAR 2025 to 17 APR 2025

SC-4, 20 MAR 2025 to 17 APR 2025