

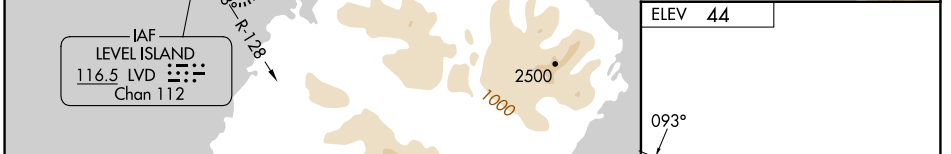
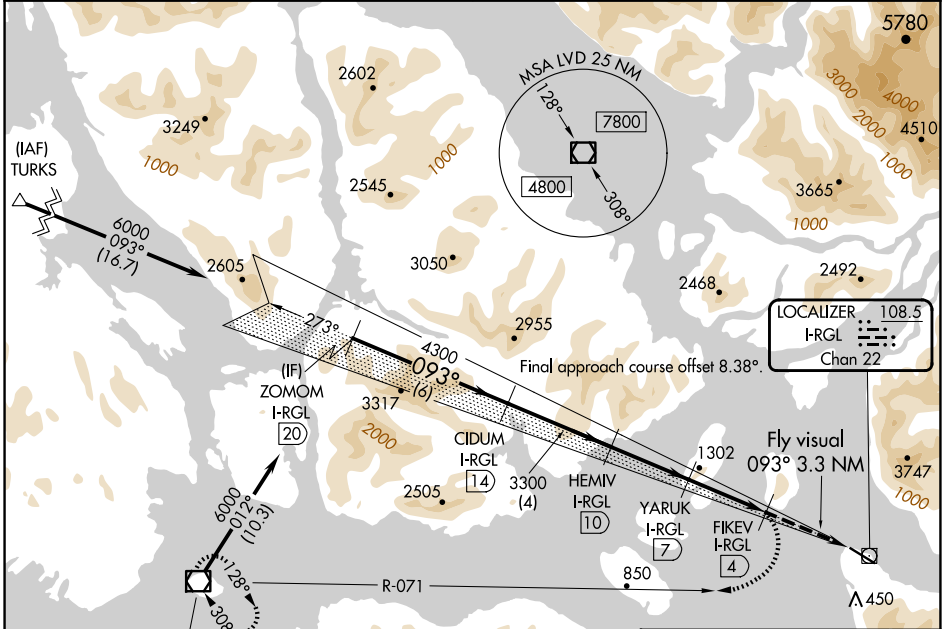
LOC/DME I-RGL <b>108.5</b> Chan <b>22</b>	APP CRS <b>093°</b>	Rwy Idg TDZE Apt Elev <b>N/A</b> <b>N/A</b> <b>44</b>
---	------------------------	--

# LDA-C

## WRANGELL (WRG) (PAWG)

<p><b>⚠</b> Circling NA south of Rwy 10-28. DME required. Any go-around commenced after passing the MAP will not provide standard obstacle clearance.</p> <p><b>❄</b> -5°C</p>	<p>MISSED APPROACH: Immediate climbing right turn to 6000 on LVD VOR/DME R-071 to LVD VOR/DME and hold.</p>
--	---

AWOS-3P <b>128.5</b>	ANCHORAGE CENTER <b>118.0</b>	SITKA RADIO <b>122.45</b>	CTAF <b>122.6</b>
-------------------------	----------------------------------	------------------------------	----------------------



<p><b>C</b> CIRCLING</p>	<p>1560-3</p>	<p>1516 (1600-3)</p>	<p>2460-3</p> <p>2416 (2500-3)</p>	<p>NA</p>	<p>REIL Rwys 10 and 28</p> <p>HIRL Rwy 10-28</p>
	<p>ELEV 44</p>				

AK, 20 FEB 2025 to 17 APR 2025

AK, 20 FEB 2025 to 17 APR 2025