

LOC/DME I-RGL 108.5 Chan 22	APP CRS 093°	Rwy Idg TDZE Apt Elev N/A N/A 44
---	------------------------	--

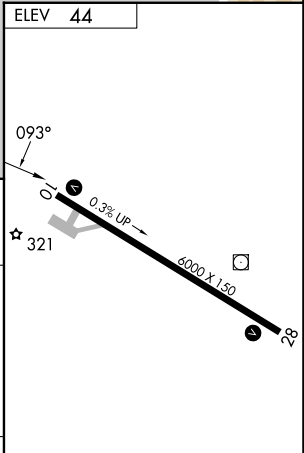
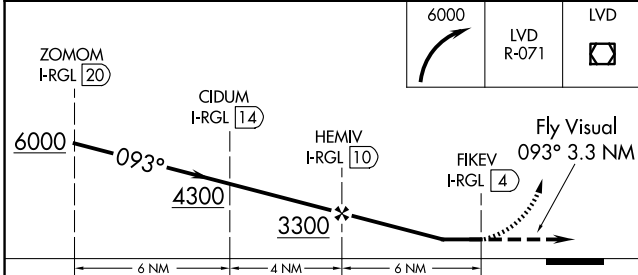
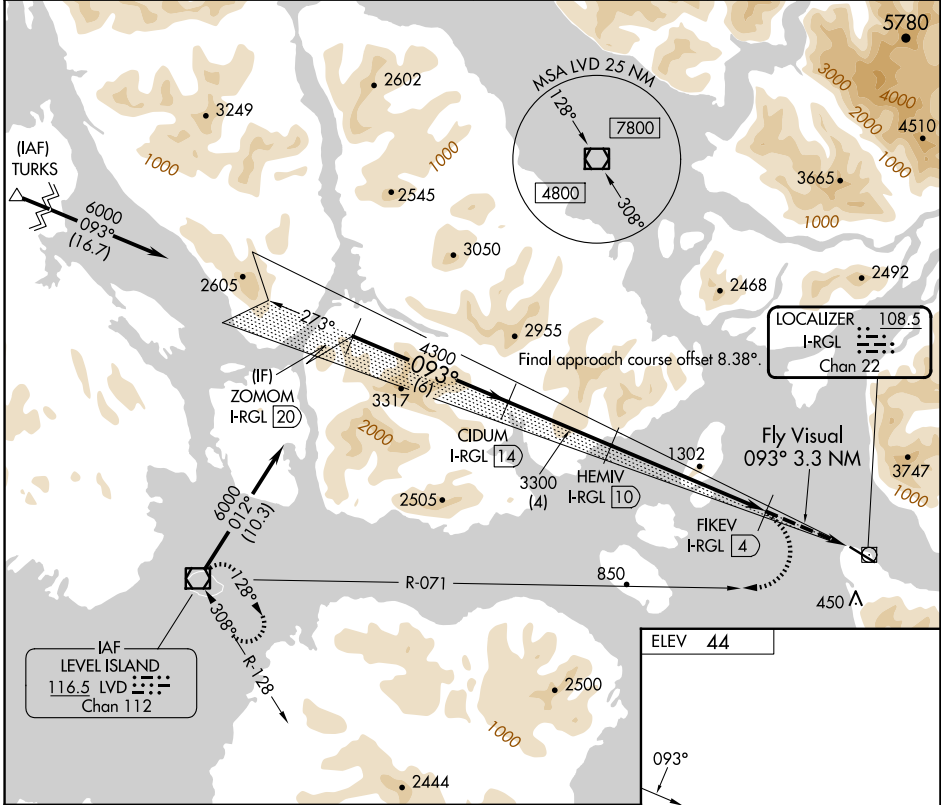
LDA-D

WRANGELL (WRG) (PAWG)

⚠ Circling NA north of Rwy 10-28. DME Required. Any go-around commenced after passing the MAP will not provide standard obstacle clearance.

⚠ MISSED APPROACH: Climbing right turn to 6000 on LVD VOR/DME R-071 to LVD VOR/DME and hold.

AWOS-3P 128.5	ANCHORAGE CENTER 118.0	SITKA RADIO 122.45	CTAF 122.6
-------------------------	----------------------------------	------------------------------	----------------------



CATEGORY	A	B	C	D
C CIRCLING		NA		3260-3 3216 (3300-3)

REIL Rwys 10 and 28
HIRL Rwy 10-28

AK, 20 FEB 2025 to 17 APR 2025

AK, 20 FEB 2025 to 17 APR 2025