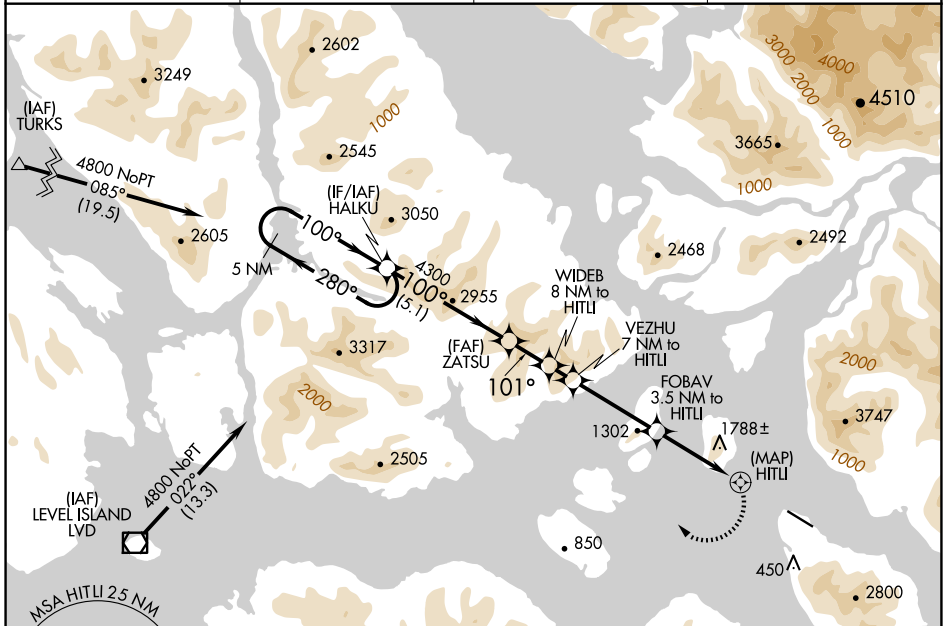


APP CRS	Rwy Idg	6000
101°	TDZE	27
	Apt Elev	44

RNAV (GPS) RWY 10

WRANGELL (WRG) (PAWG)

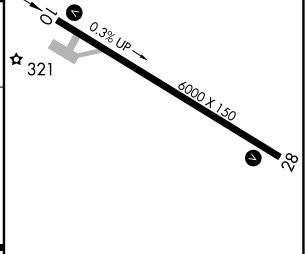
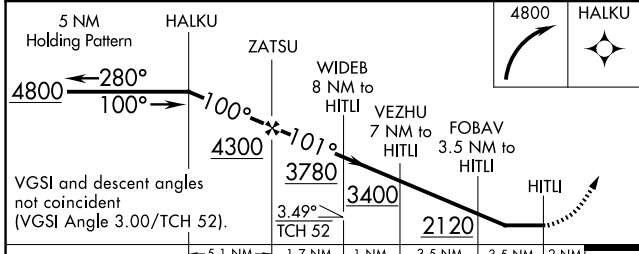
RNP APCH-GPS		MISSED APPROACH: Climbing right turn to 4800 direct HALKU and hold.	
⚠ Circling NA South of Rwy 10-28. ⚠ Procedure NA at night. ❄ -5°C Helicopter visibility reduction below 1 SM NA.			
AWOS-3P	ANCHORAGE CENTER	SITKA RADIO	CTAF
128.5	118.0	122.45	122.6 Ⓢ



AK, 20 FEB 2025 to 17 APR 2025

AK, 20 FEB 2025 to 17 APR 2025

ELEV	44	TDZE	27
------	----	------	----



CATEGORY	A	B	C	D
LNVA MDA	2080-2½ 2053 (2100-2½)	2080-3 2053 (2100-3)	2080-3 2053 (2100-3)	NA
C CIRCLING	2080-2½ 2036 (2100-2½)	2500-3 2456 (2500-3)	2500-3 2456 (2500-3)	NA

REIL Rwy 10 and 28 **Ⓢ**
HIRL Rwy 10-28 **Ⓢ**