

WAAS CH 62827 W23A	APP CRS 232°	Rwy Idg TDZE Apt Elev	7100 93 93
--	------------------------	-----------------------------	---------------------------------------

RNAV (GPS) RWY 23

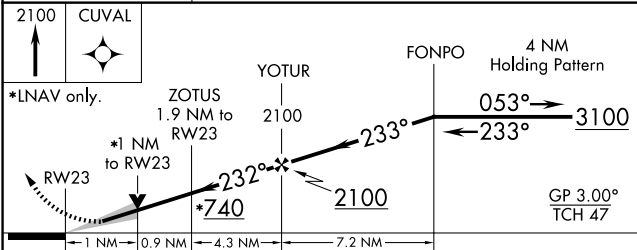
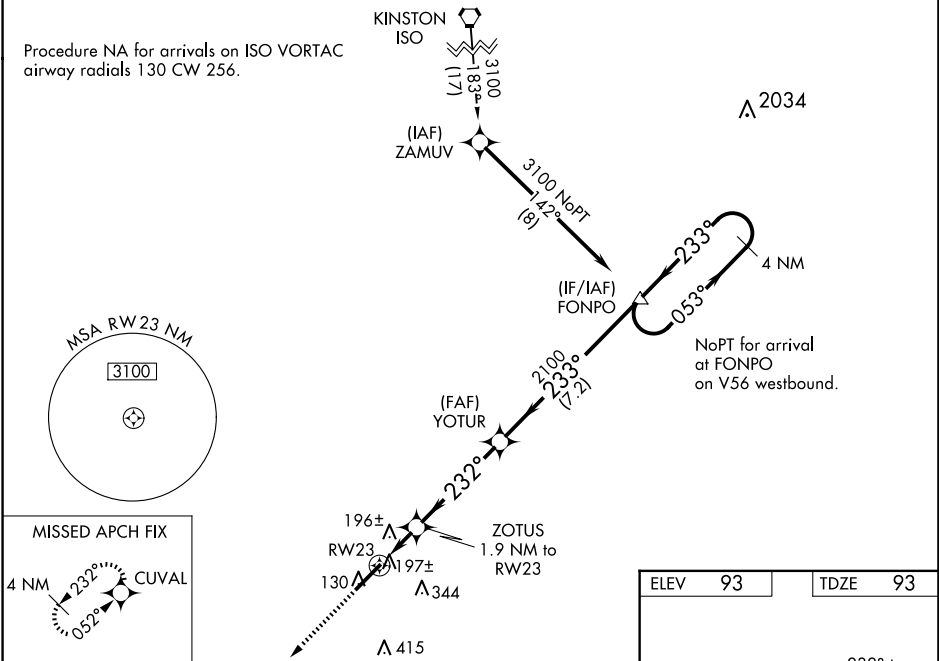
ALBERT J ELLIS (O.A.J)

Baro-VNAV NA when using Wilmington altimeter setting. For uncompensated Baro-VNAV systems, LNAV/VNAV NA below -15°C (5°F) or above 43°C (109°F). DME/DME RNP-0.3 NA. **VDP NA** with Wilmington altimeter setting. When local altimeter setting not received, use Wilmington altimeter setting and increase LPV DA to 387 feet and all visibilities 3/8 SM. Increase LNAV/VNAV DA to 591 feet; increase all MDAs 100 feet and LNAV visibility Cat C/D 3/8 SM, and Circling visibility Cat C/D 1/4 SM.

MISSED APPROACH:
Climb to 2100 direct
CUVAL and hold.

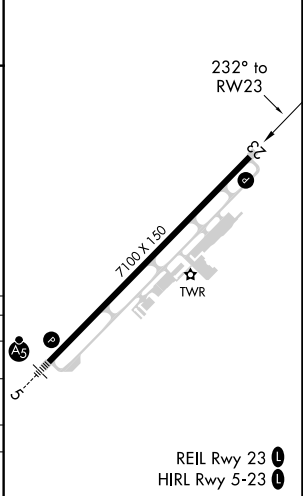
ATIS 124.475	WILMINGTON APP CON ★ 135.75 317.425	ELLIS TOWER ★ 132.65 (CTAF)	GND CON 125.4	CLNC DEL 121.4 257.6 (when twr closed)	UNICOM 122.95
------------------------	---	---------------------------------------	-------------------------	---	-------------------------

Procedure NA for arrivals on ISO VORTAC
airway radials 130 CW 256.



ELEV 93	TDZE 93
---------	---------

CATEGORY	A	B	C	D
LPV DA		293-3/4	200 (200-3/4)	
LNAV/VNAV DA		497-13/8	404 (500-13/8)	
LNAV MDA		460-1	367 (400-1)	
CIRCLING	540-1 447 (500-1)	560-1 467 (500-1)	720-13/4 627 (700-13/4)	720-2 627 (700-2)



SE-2, 20 MAR 2025 to 17 APR 2025

SE-2, 20 MAR 2025 to 17 APR 2025