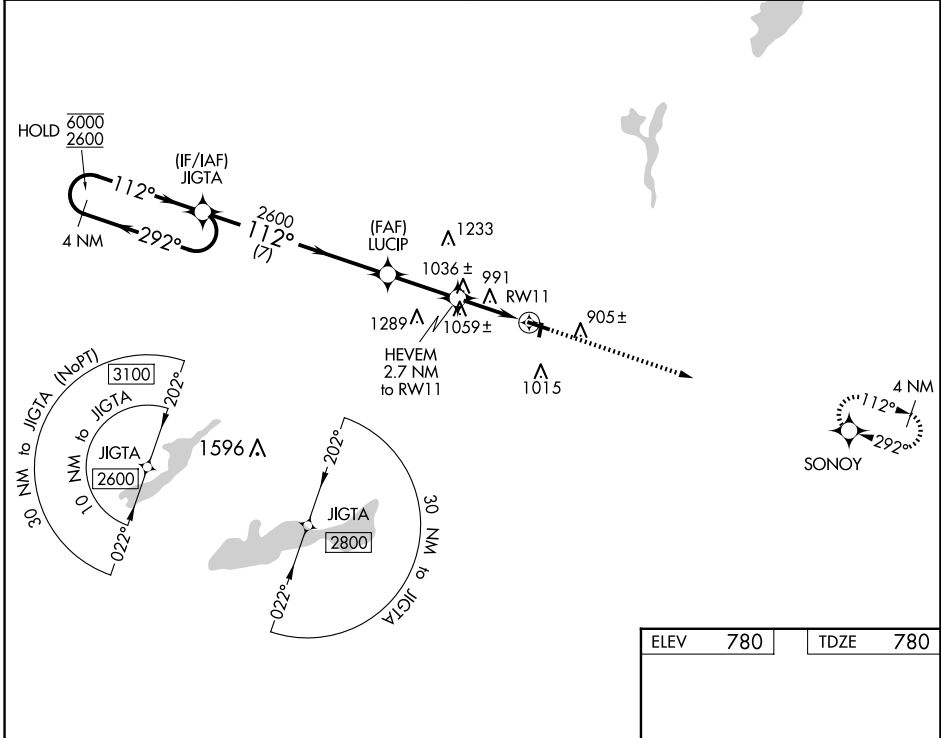


WAAS CH <b>90134</b> <b>W11A</b>	APP CRS <b>112°</b>	Rwy Idg TDZE Apt Elev	<b>4300</b> <b>780</b> <b>780</b>
--	------------------------	-----------------------------	---

# RNAV (GPS) RWY 11

BURLINGTON MUNI (BUU)

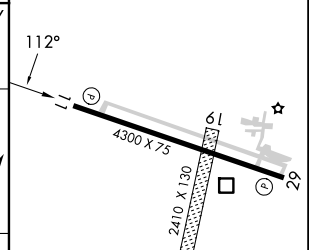
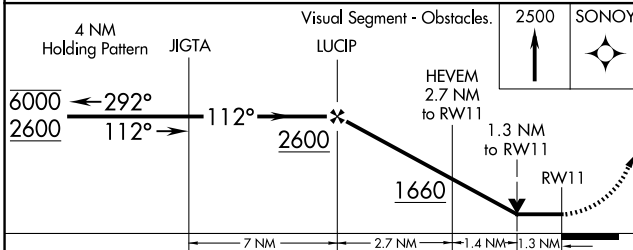
RNP APCH - GPS.		MISSED APPROACH: Climb to 2500 direct SONOY and hold.	
<p>⚠ Circling NA to Rws 1 and 19.          ⚠ Rwy 11 helicopter visibility reduction below 3/4 SM NA.</p>		AWOS-3 <b>125.275</b>	MILWAUKEE APP CON <b>135.875 307.0</b>
		GCO <b>121.725</b>	UNICOM <b>123.05</b> (CTAF) <b>1</b>



EC-3, 20 MAR 2025 to 17 APR 2025

EC-3, 20 MAR 2025 to 17 APR 2025

ELEV	780	TDZE	780
------	-----	------	-----



CATEGORY	A	B	C	D
LP MDA	1300-1	520 (600-1)	1300-1 <sup>3</sup> / <sub>8</sub>	520 (600-1 <sup>3</sup> / <sub>8</sub> )
LNAV MDA	1320-1	540 (600-1)	1320-1 <sup>1</sup> / <sub>2</sub>	540 (600-1 <sup>1</sup> / <sub>2</sub> )
<b>C</b> CIRCLING	1320-1 540 (600-1)	1380-1 600 (600-1)	1380-1 <sup>1</sup> / <sub>2</sub> 600 (600-1 <sup>1</sup> / <sub>2</sub> )	1560-2 <sup>1</sup> / <sub>2</sub> 780 (800-2 <sup>1</sup> / <sub>2</sub> )

MIRL Rwy 11-29 **1**  
 REIL Rws 11 and 29 **1**