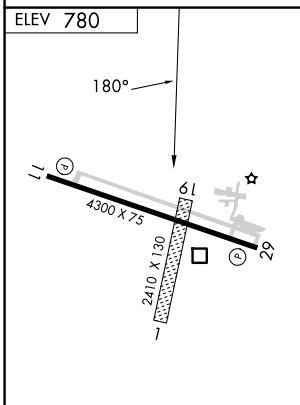
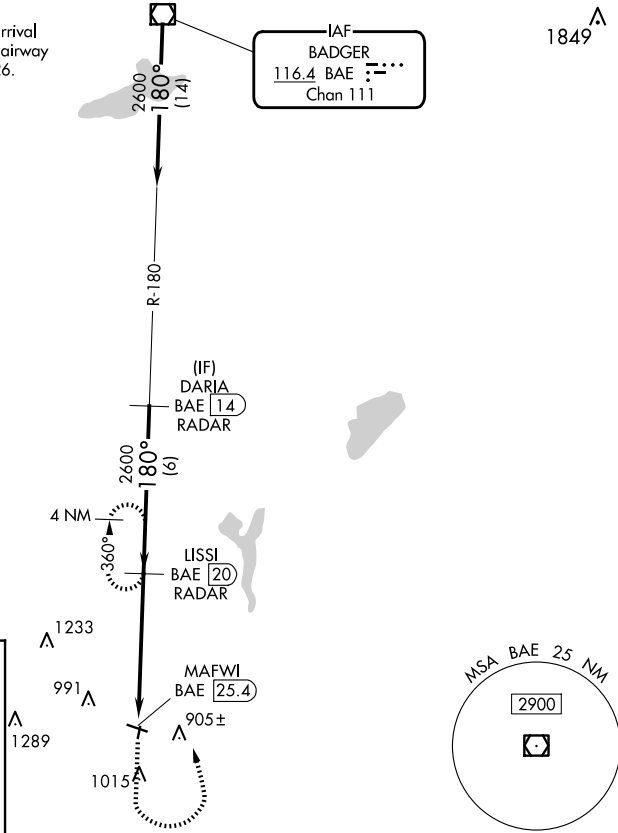


VOR/DME BAE	APP CRS	Rwy Idg	N/A
<b>116.4</b>	<b>180°</b>	TDZE	N/A
Chan <b>111</b>		Apt Elev	<b>780</b>

**VOR-A**  
BURLINGTON MUNI (BUU)

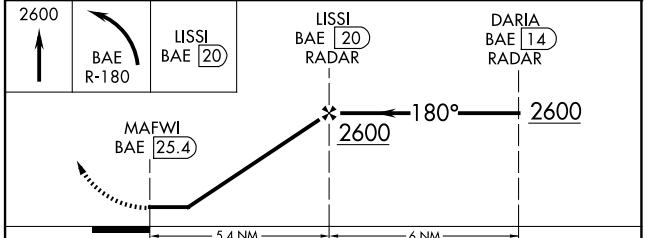
DME or RADAR required.		MISSED APPROACH: Climb to 2600 then left turn on BAE VOR/DME R-180 to LISSI/20 DME/RADAR and hold.	
Circling NA to Rwy 1 and 19.		AWOS-3 <b>125.275</b>	MILWAUKEE APP CON <b>135.875 307.0</b>
		GCO <b>121.725</b>	UNICOM <b>123.05</b> (CTAF) <b>0</b>

Procedure NA for arrival on BAE VOR/DME airway radials 119 CW 226.



MIRL Rwy 11-29 **0**  
REIL Rwy 11 and 29 **0**

FAF to MAP	5.4 NM				
Knots	60	90	120	150	180
Min:Sec	5:24	3:36	2:42	2:10	1:48



CATEGORY	A	B	C	D
<b>CIRCLING</b>	1400-1	620 (700-1)	1400-1 3/4 620 (700-1 3/4)	1560-2 1/2 780 (800-2 1/2)

EC-3, 20 MAR 2025 to 17 APR 2025

EC-3, 20 MAR 2025 to 17 APR 2025