

VORTAC LAL 116.0 Chan 107	APP CRS 275°	Rwy Idg 3950 TDZE 154 Apt Elev 154
---	------------------------	---

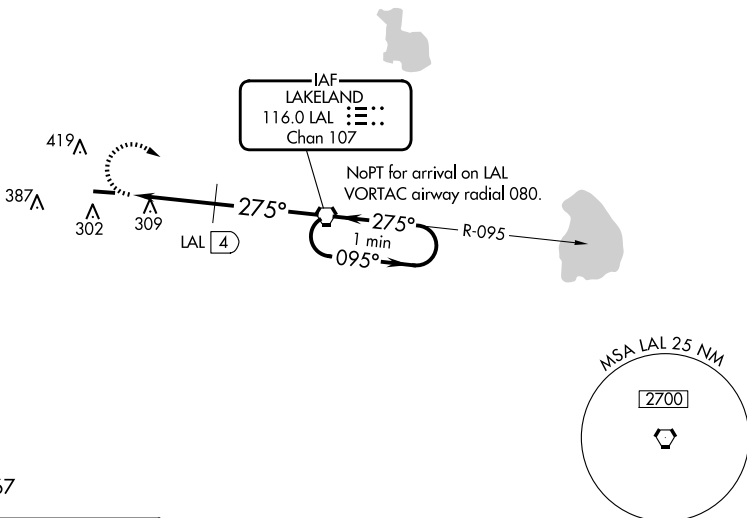
VOR RWY 28

PLANT CITY (PCM)

NA When local altimeter setting not received, use Lakeland altimeter setting and increase all MDA 20 feet. Straight-in and Circling Rwy 28 NA at night. Rwy 28 helicopter visibility reduction below 1 SM NA.

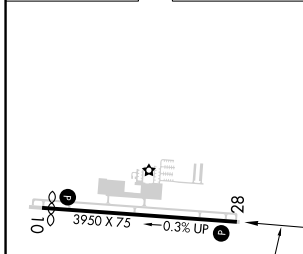
MISSED APPROACH: Climbing right turn to 2000 direct LAL VORTAC and hold.

AWOS-3 120.025	TAMPA APP CON 120.65 290.3	CLNC DEL 121.725 (GCO)	UNICOM 123.05 (CTAF) 0
--------------------------	--------------------------------------	----------------------------------	----------------------------------



▲1667

ELEV 154	TDZE 154
-----------------	-----------------



MIRL Rwy 10-28 **0**
REIL Rwys 10 and 28 **0**

FAF to MAP **7.7 NM**

Knots	60	90	120	150	180
Min:Sec	7:42	5:08	3:51	3:05	2:34

2000	LAL	One Minute Holding Pattern		
CATEGORY	A	B	C	D
S-28	800-1	646 (700-1)	NA	
C CIRCLING	800-1	646 (700-1)	NA	
DME MINIMUMS				
S-28	600-1	446 (500-1)	NA	
C CIRCLING	700-1 546 (600-1)	800-1 646 (700-1)	NA	

SE-3, 20 MAR 2025 to 17 APR 2025

SE-3, 20 MAR 2025 to 17 APR 2025