

WAAS CH 56308 W16A	APP CRS 158°	Rwy Idg TDZE Apt Elev	5001 1069 1069
---------------------------------	------------------------	-----------------------------	---

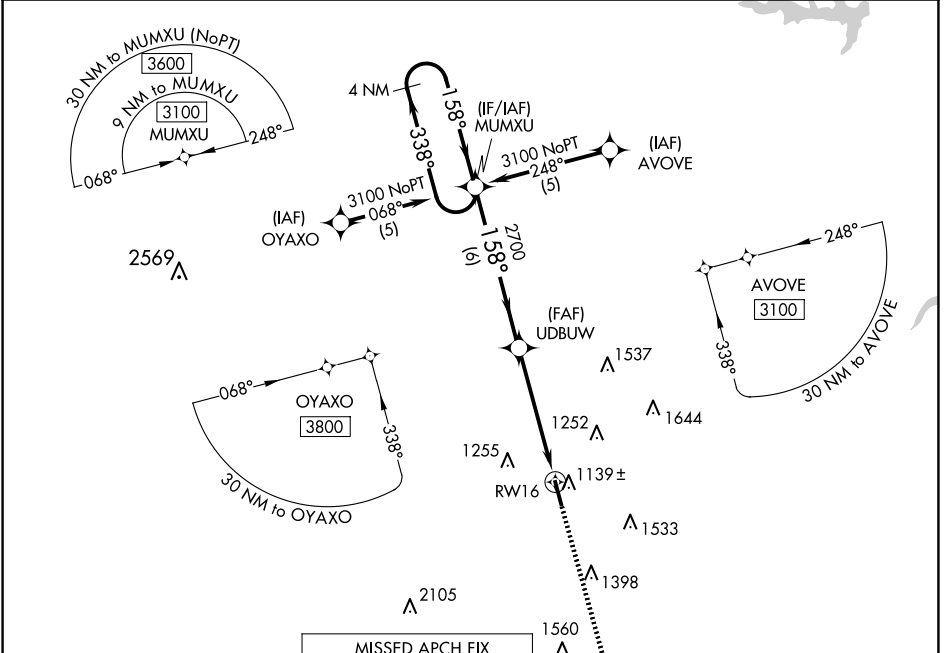
RNAV (GPS) RWY 16

GUTHRIE/EDMOND RGNL (GOK)

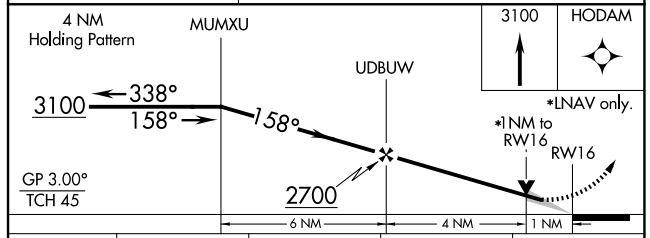
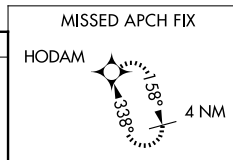
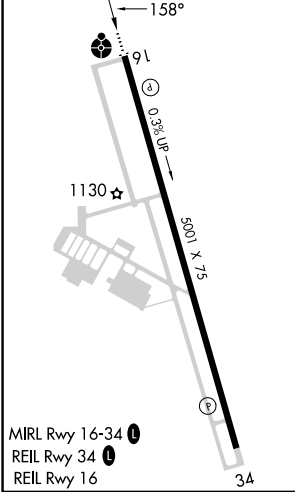
⚠ DME/DME RNP-0.3 NA. VDP NA when using OKC Will Rogers Intl altimeter setting. When local altimeter setting not received, use OKC Will Rogers Intl altimeter setting and increase DA/MDA 100 feet and LPV all Cats visibility ¼ mile.

ODALS **MISSED APPROACH:** Climb to 3100 direct HODAM and hold.

ASOS 133.975	OKE CITY APP CON 124.2 336.4	UNICOM 122.8 (CTAF)
------------------------	--	-------------------------------



ELEV 1069	TDZE 1069
-----------	-----------



CATEGORY	A	B	C	D
LPV DA	1319-1	250 (300-1)		NA
LNNAV MDA	1420-1	351 (400-1)		NA
CIRCLING	1540-1 471 (500-1)	1560-1 491 (500-1)		NA

SC-1, 20 MAR 2025 to 17 APR 2025

SC-1, 20 MAR 2025 to 17 APR 2025