

WAAS CH 87125 W16A	APP CRS 164°	Rwy Idg TDZE Apt Elev	3218 289 289
--	------------------------	-----------------------------	---

RNAV (GPS) RWY 16

KENEDY RGNL (2R.9)

RNP APCH.

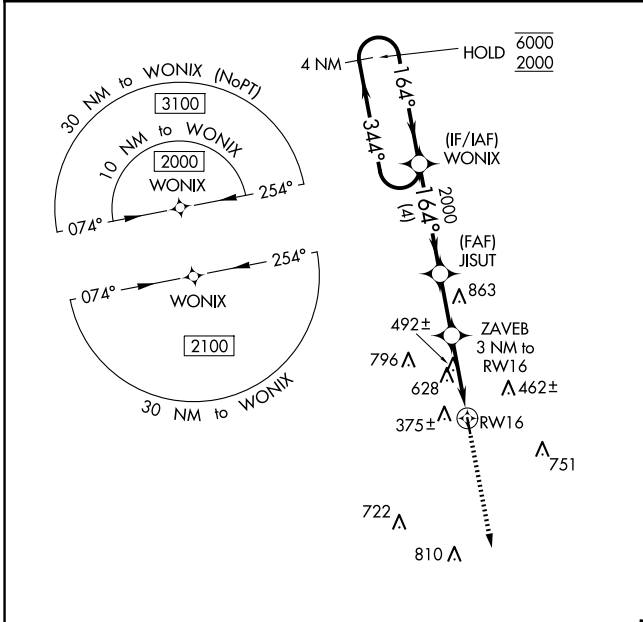
Procedure NA at night. When local altimeter setting not received, use Pleasanton altimeter setting. Rwy 16 helicopter visibility reduction below 1 SM NA.

MISSED APPROACH: Climb to 2000 direct FORLU and hold.

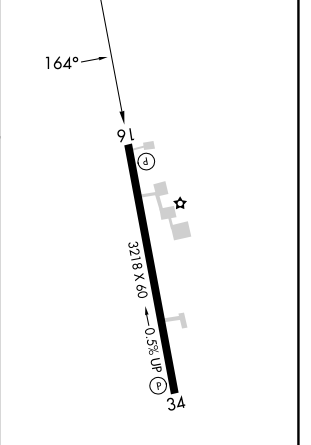
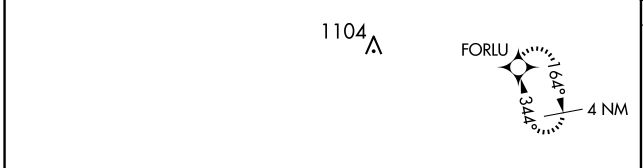
AWOS 3-PT
118.45

HOUSTON CENTER
134.6 322.5

UNICOM
123.0 (CTAF) 0



ELEV 289	TDZE 289
-----------------	-----------------



4 NM Holding Pattern	WONIX	JISUT	ZAVEB 3 NM to RWY 16	RWY 16
6000 ← 344°	← 164°	→ 164°	→ 2000	→ 1260
2000				
4 NM		2.3 NM	3 NM	

CATEGORY	A	B	C	D
LP MDA	860-1	571 (600-1)	NA	
LNAV MDA	1040-1 751 (800-1)	1040-1¼ 751 (800-1¼)	NA	

REIL Rwy 16
MIRL Rwy 16-34 0

SC-3, 20 MAR 2025 to 17 APR 2025

SC-3, 20 MAR 2025 to 17 APR 2025