

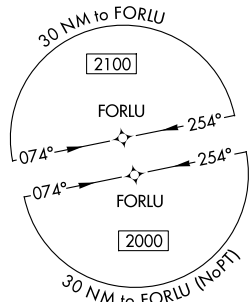
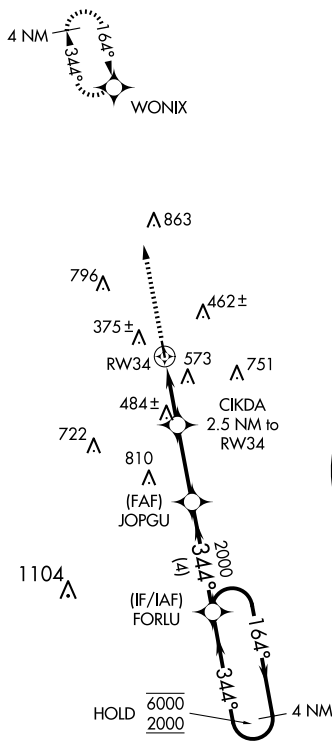
WAAS CH 93925 W34A	APP CRS 344°	Rwy Idg 3218 TDZE 288 Apt Elev 289
--	------------------------	---

RNAV (GPS) RWY 34

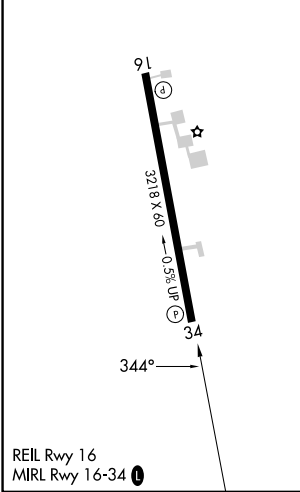
KENEDY RGNL (2R.9)

RNP APCH.	Procedure NA at night. Rwy 34 helicopter visibility reduction below 1 SM NA. When local altimeter setting not received, use Pleasanton altimeter setting.	MISSED APPROACH: Climb to 2000 direct WONIX and hold.
-----------	--	---

AWOS 3-PT 118.45	HOUSTON CENTER 134.6 322.5	UNICOM 123.0 (CTAF) 0
----------------------------	--------------------------------------	---------------------------------



ELEV 289	TDZE 288
----------	----------



2000	WONIX	Visual Segment - Obstacles.			
		JOPGU		FORLU	
RW34		CIKDA 2.5 NM to RW34	JOPGU	FORLU	4 NM Holding Pattern
1100		2000	344°	164°	6000
2.5 NM		2.8 NM	4 NM		2000
CATEGORY	A	B	C	D	
LP MDA	840-1	552 (600-1)		NA	
LNAV MDA	900-1	612 (700-1)		NA	

SC-3, 20 MAR 2025 to 17 APR 2025

SC-3, 20 MAR 2025 to 17 APR 2025