

LYONS, KANSAS

AL-5982 (FAA)

23054

| | | | |
|--|------------------------|-----------------------------|---|
| WAAS CH 99339 W17A | APP CRS 174° | Rwy Idg TDZE Apt Elev | 4400 1692 1692 |
|--|------------------------|-----------------------------|---|

RNAV (GPS) RWY 17

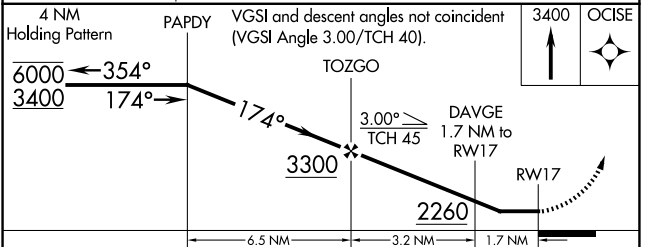
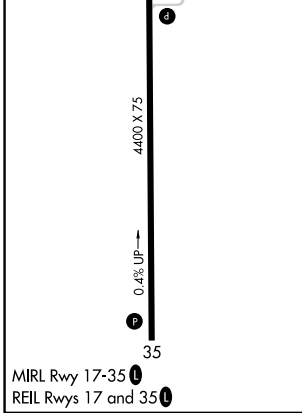
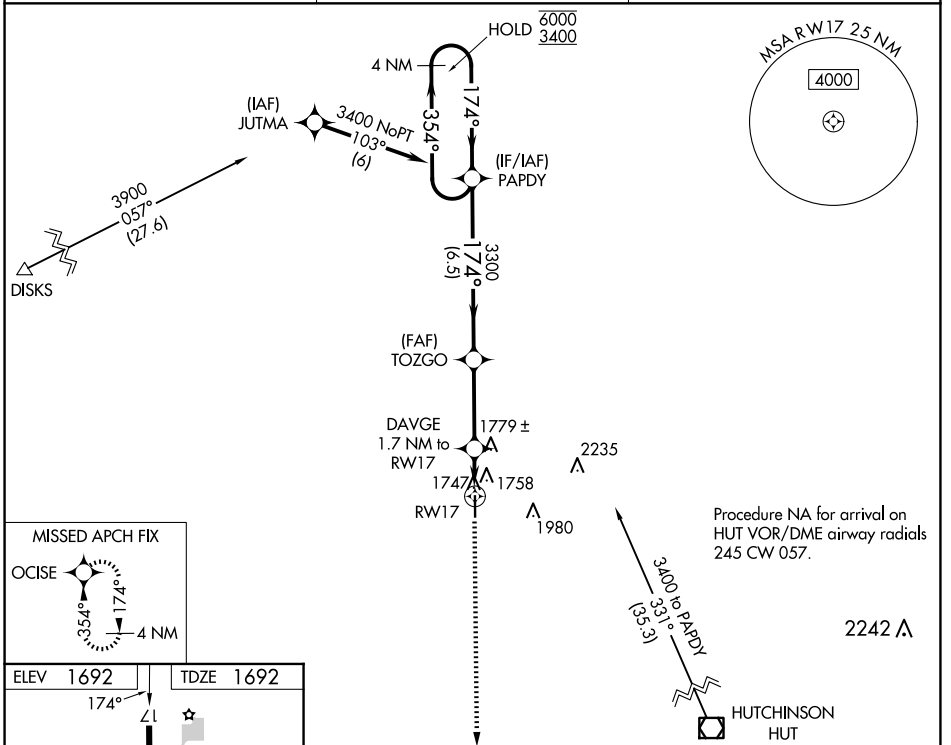
LYONS-RICE COUNTY MUNI (LYO)

RNP APCH.

⚠ Rwy 17 helicopter visibility reduction below 1 SM NA.
 ⚠ Straight-in/Circling Rwy 17 NA at night.
 When local altimeter setting not received, use Hutchinson altimeter setting.

MISSED APPROACH: Climb to 3400 direct OCISE and hold.

| | | |
|---------------------------|--|--|
| AWOS-3P 119.925 | KANSAS CITY CENTER 118.8 322.425 | UNICOM 122.8 (CTAF) 0 |
|---------------------------|--|--|



| CATEGORY | A | B | C | D |
|-------------------|--------|-------------|----|---|
| LP MDA | 2080-1 | 388 (400-1) | NA | |
| LNAV MDA | 2120-1 | 428 (500-1) | NA | |
| C CIRCLING | 2260-1 | 568 (600-1) | NA | |

LYONS, KANSAS
 Orig-A 08NOV18

38°20'N-98°14'W

LYONS-RICE COUNTY MUNI (LYO)
RNAV (GPS) RWY 17

NC-2, 20 MAR 2025 to 17 APR 2025

NC-2, 20 MAR 2025 to 17 APR 2025