

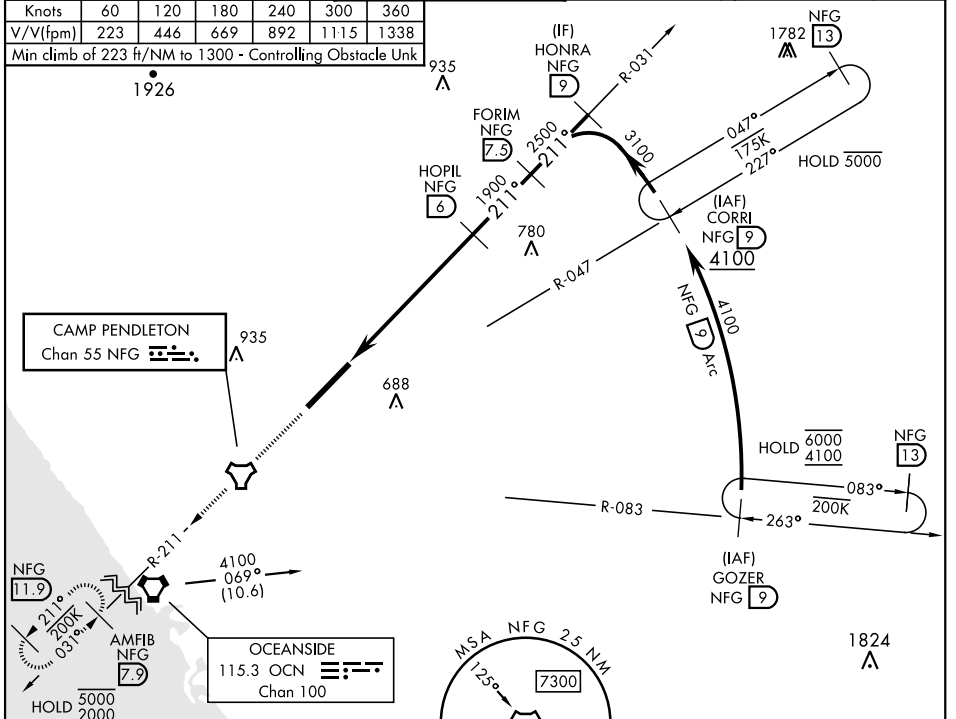
# COPTER TACAN RWY 21

TACAN NFG Chan 55	APCH CRS 211°	Rwy ldg TDZE Arpt Elev 6005 78 78	[USN]	CAMP PENDLETON MCAS (MUNN FLD) (KNFG)
----------------------	------------------	--	-------	---------------------------------------

▼ \* When ALS inop, increase vis to 1 mile.  
Visibility reduction by helicopters not authorized.

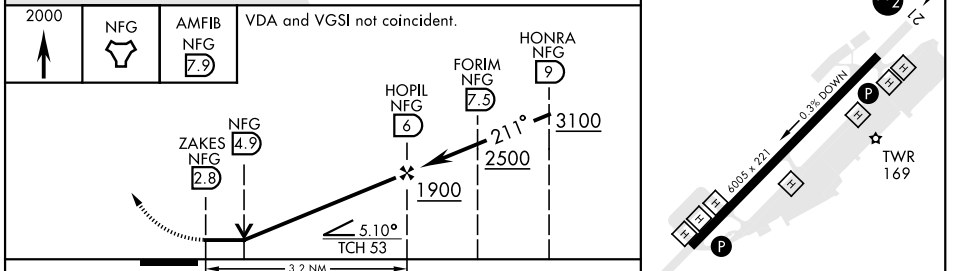
SALSF
MISSED APPROACH: Climb to 2000 direct NFG TACAN then direct AMFIB and hold.

ATIS ★ 285.45	SOCAL APP CON 127.3 323.0	TOWER ★ 128.775 340.2	GND CON 134.675 360.2	CLNC DEL 134.675 271.6	ASR/ PAR
------------------	------------------------------	--------------------------	--------------------------	---------------------------	-------------



ELEV 78	TDZE 78
---------	---------

EMERG SAFE ALT 100 NM 13,600



CATEGORY	COPTER
H-21*	940- $\frac{3}{4}$ 862 (900- $\frac{3}{4}$ )
CIRCLING	NOT AUTHORIZED

HIRL Rwy 3-21

# COPTER TACAN RWY 21

SW-3, 20 MAR 2025 to 17 APR 2025

SW-3, 20 MAR 2025 to 17 APR 2025