

NDB UWL 385	APP CRS 087°	Rwy Idg 4201
		TDZE 1089
		Apt Elev 1090

NDB RWY 10

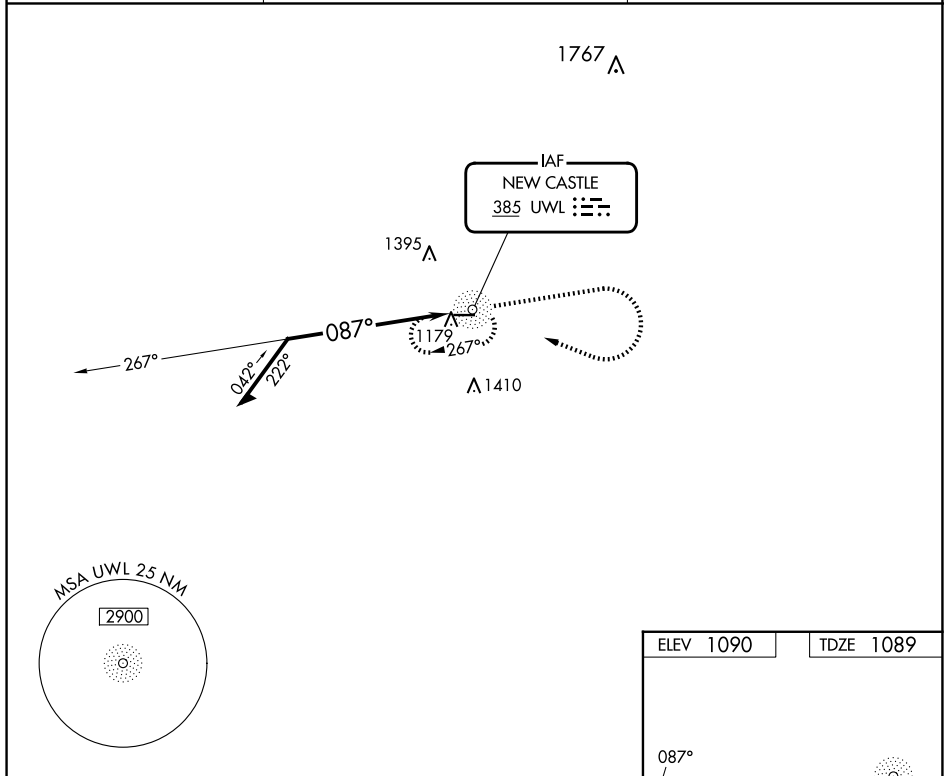
NEW CASTLE HENRY COUNTY MARLATT FLD (UWL)

RADAR required for procedure entry.

▼ Rwy 10 helicopter visibility reduction below $\frac{3}{4}$ SM NA. When local altimeter setting not received, use Anderson altimeter setting and increase all MDAs 80 feet, S-10 visibility Cat C/D $\frac{1}{8}$ SM, and Circling visibility Cat C/D $\frac{1}{4}$ SM.

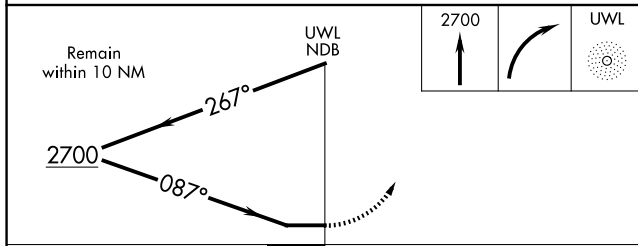
MISSED APPROACH: Climb to 2700 then right turn direct UWL NDB and hold.

AWOS-3 132.375	INDIANAPOLIS APP CON 135.45 317.8	UNICOM 123.05 (CTAF) 0
--------------------------	---	----------------------------------

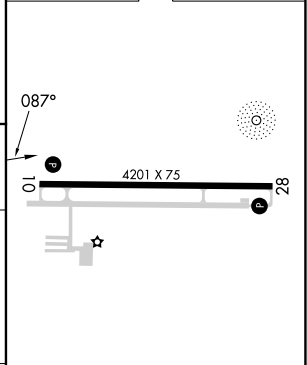


EC-2, 20 MAR 2025 to 17 APR 2025

EC-2, 20 MAR 2025 to 17 APR 2025



ELEV 1090	TDZE 1089
-----------	-----------



CATEGORY	A	B	C	D
S-10	1680-1	591 (600-1)	1680-1 $\frac{3}{4}$	591 (600-1 $\frac{3}{4}$)
C CIRCLING	1680-1	590 (600-1)	1720-1 $\frac{3}{4}$ 630 (700-1 $\frac{3}{4}$)	1720-2 630 (700-2)

MIRL Rwy 10-28 **0**
REIL Rwy 10 and 28 **0**

NDB RWY 10