

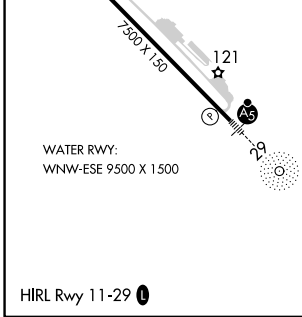
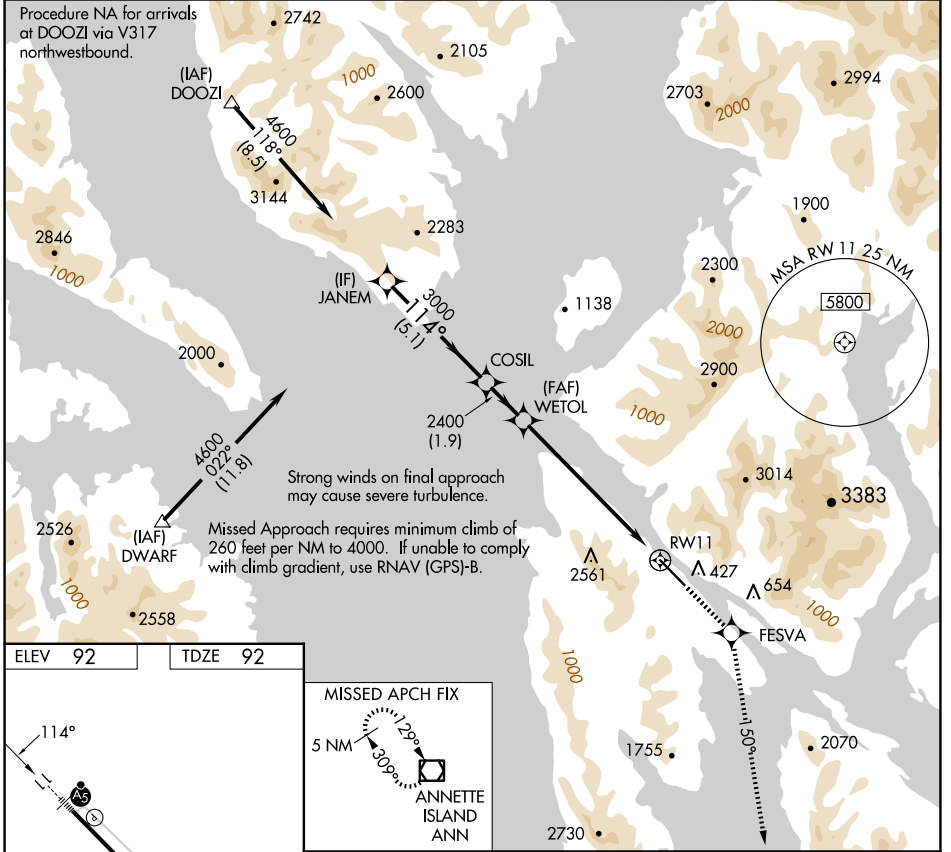
WAAS CH <b>58009</b> <b>W11A</b>	APP CRS <b>114°</b>	Rwy Idg TDZE Apt Elev	<b>7500</b> <b>92</b> <b>92</b>
--	------------------------	-----------------------------	---------------------------------------

# RNAV (GPS) RWY 11

KETCHIKAN INTL (KTN)(PAKT)

RNP APCH-GPS.	MALSR	MISSED APPROACH: Climb to 5000 direct FESVA and on 150° track to ANN VOR/DME and hold.
NA For inoperative ALS, increase LPV DA visibility to RVR 6000.	AS	

AFIS <b>134.45</b>	ANCHORAGE CENTER <b>118.5 284.6</b>	KETCHIKAN RADIO <b>123.6 (CTAF)</b>
-----------------------	--	--



MISSED APCH FIX ANNETTE ISLAND ANN	Procedure Turn NA	JANEM	COSIL	WETOL	5000	FESVA	150° tr	ANN
	GP 3.00° TCH 50	4600	3000	2400	2400			
		5.1 NM	1.9 NM	6.8 NM				
CATEGORY	A	B	C	D				
LPV DA	442/40			350 (400- $\frac{3}{4}$ )				NA

AK, 20 FEB 2025 to 17 APR 2025

AK, 20 FEB 2025 to 17 APR 2025