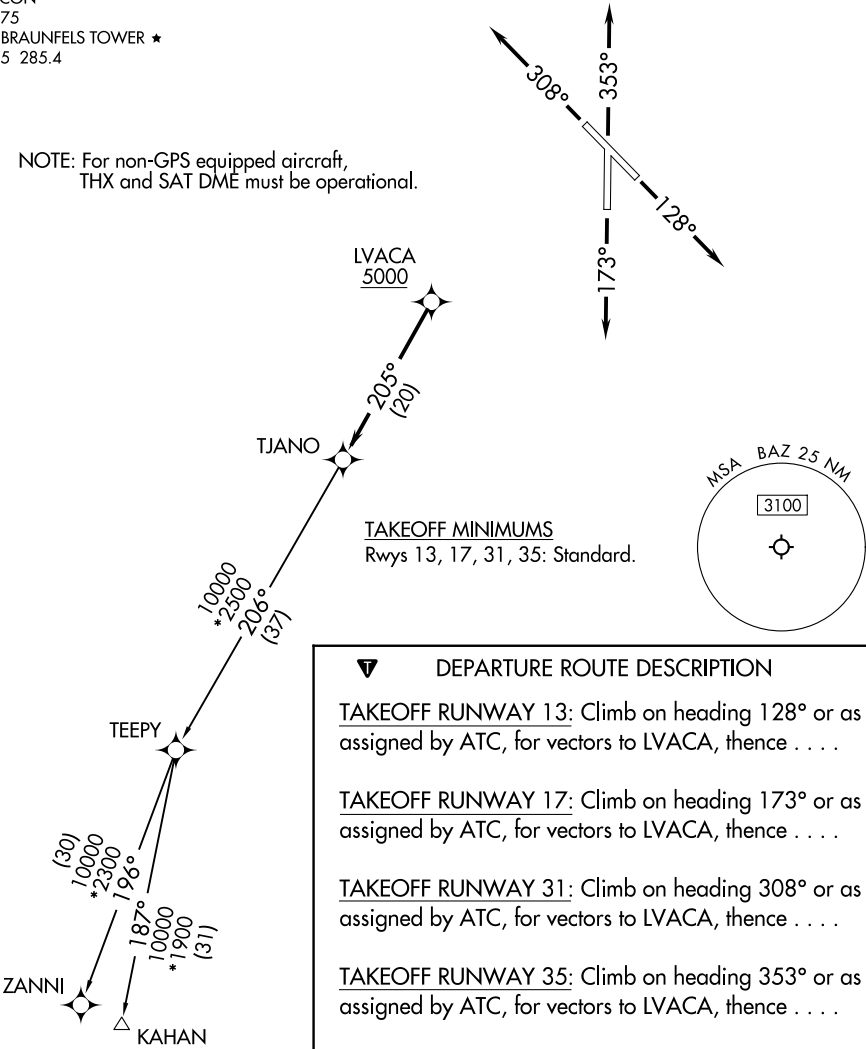


SAN ANTONIO DEP CON
128.05 290.225
ATIS
119.325
CLNC DEL
134.75
GND CON
120.175
NEW BRAUNFELS TOWER ★
127.05 285.4

RNAV 1 - DME/DME IRU or GPS.
RADAR required.

**TOP ALTITUDE:
ASSIGNED BY ATC**

NOTE: For non-GPS equipped aircraft,
THX and SAT DME must be operational.



▼ DEPARTURE ROUTE DESCRIPTION

TAKEOFF RUNWAY 13: Climb on heading 128° or as assigned by ATC, for vectors to LVACA, thence

TAKEOFF RUNWAY 17: Climb on heading 173° or as assigned by ATC, for vectors to LVACA, thence

TAKEOFF RUNWAY 31: Climb on heading 308° or as assigned by ATC, for vectors to LVACA, thence

TAKEOFF RUNWAY 35: Climb on heading 353° or as assigned by ATC, for vectors to LVACA, thence

. . . . on track 205° to TJANO, then on Transition.
Maintain ATC assigned altitude.

KAHAN TRANSITION (TJANO1.KAHAN)
ZANNI TRANSITION (TJANO1.ZANNI)

Note: Chart not to scale.

SC-3, 20 MAR 2025 to 17 APR 2025

SC-3, 20 MAR 2025 to 17 APR 2025