

WAAS CH <b>86224</b> <b>W19A</b>	APP CRS <b>191°</b>	Rwy Idg TDZE <b>265</b> Apt Elev <b>265</b>	<b>6008</b>
--	------------------------	---	-------------

# RNAV (GPS) RWY 19

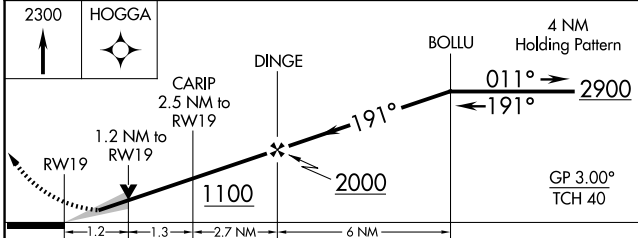
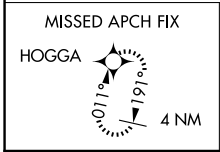
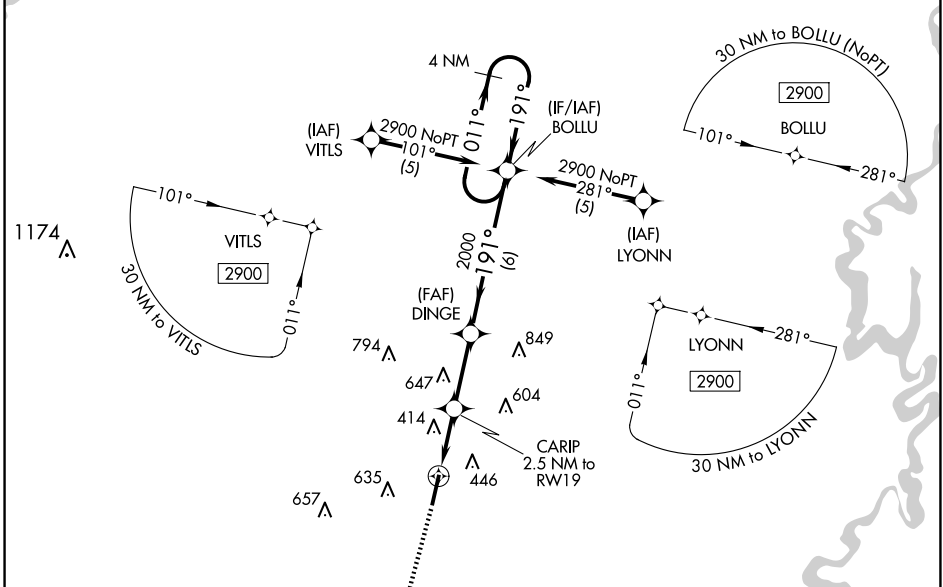
SEARCY RGNL (SRC)

**RNP APCH-GPS.**

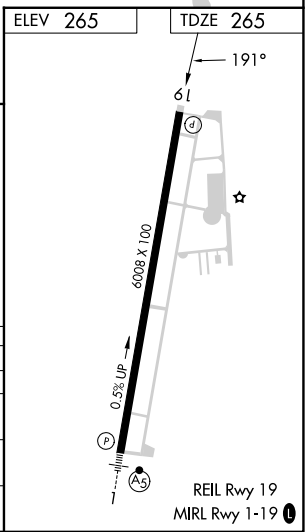
When local altimeter setting not received, use Bill and Hillary Clinton Nil/Adams Fld altimeter setting: increase LPV DA to 604 feet and all visibilities  $\frac{1}{4}$  SM; increase all MDAs 100 feet and LNAV and Circling Cat C visibility  $\frac{1}{4}$  SM. VDP NA with Bill and Hillary Clinton Nil/Adams Fld altimeter setting. Circling NA for Cats B and C west of Rwy 1-19.

**MISSED APPROACH:** Climb to 2300 direct HOGGA and hold.

AWOS-3PT <b>128.325</b>	LITTLE ROCK APP CON <b>119.75 291.775</b>	CLNC DEL <b>119.75</b>	UNICOM <b>122.7 (CTAF)</b>
----------------------------	--	---------------------------	-------------------------------



CATEGORY	A	B	C	D
LPV DA	515- $\frac{3}{4}$		250 (300- $\frac{3}{4}$ )	NA
LNAV/VNAV DA	NA			
LNAV MDA	680-1	415 (500-1)	680-1 $\frac{1}{8}$ 415 (500-1 $\frac{1}{8}$ )	NA
CIRCLING	760-1	496 (500-1)	780-1 $\frac{1}{2}$ 515 (600-1 $\frac{1}{2}$ )	NA



SC-1, 20 MAR 2025 to 17 APR 2025

SC-1, 20 MAR 2025 to 17 APR 2025