

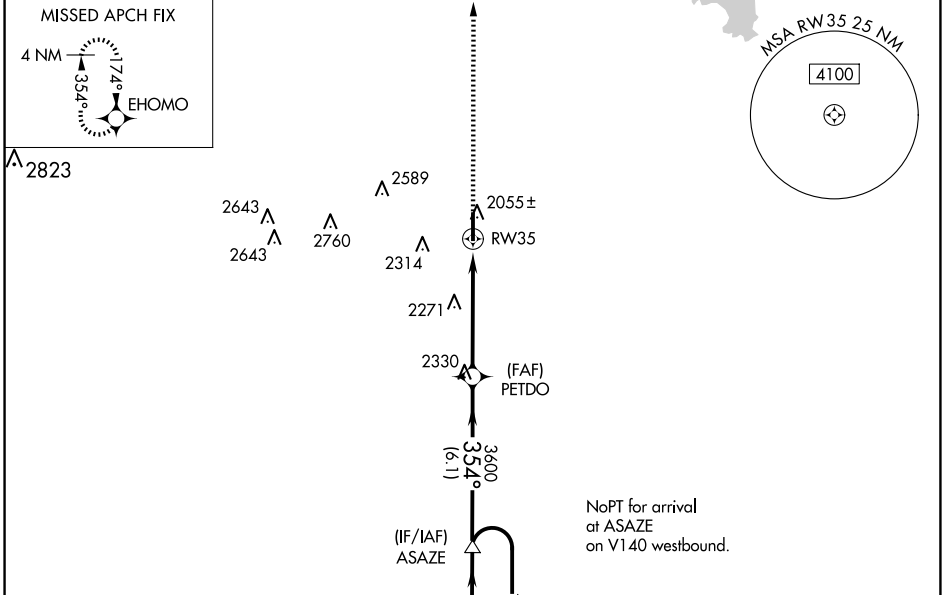
WAAS CH 53508 W35A	APP CRS 354°	Rwy Idg TDZE 1984 Apt Elev 2013
--	------------------------	---

RNAV (GPS) RWY 35

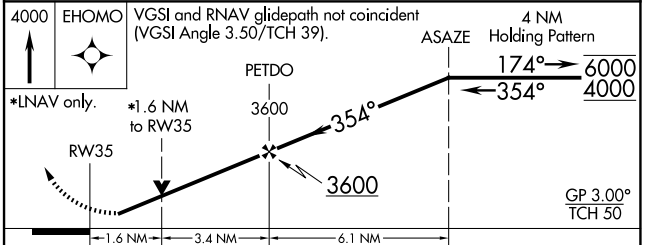
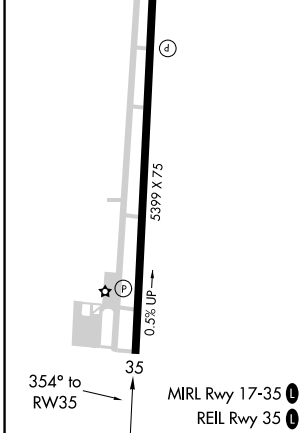
ELK CITY RGNL BUSINESS (ELK)

RNP APCH.	MISSED APPROACH: Climb to 4000 direct EHOMO and hold.
<p>▼ Rwy 35 helicopter visibility reduction below $\frac{3}{4}$ SM NA. For uncompensated Baro-VNAV systems, LNAV/VNAV NA below -18°C or above 54°C.</p>	

AWOS-3 118.225	FORT WORTH CENTER 128.4 269.37	UNICOM 122.8 (CTAF) 0
--------------------------	--	---------------------------------



ELEV 2013	TDZE 1984
-----------	-----------



CATEGORY	A	B	C	D
LPV DA		2234- $\frac{7}{8}$	250 (300- $\frac{7}{8}$)	
LNAV/VNAV DA		2377- $1\frac{3}{8}$	393 (400- $1\frac{3}{8}$)	
LNAV MDA	2640-1	656 (700-1)	2640- $1\frac{7}{8}$	656 (700- $1\frac{7}{8}$)
CIRCLING	2640-1 627 (700-1)	2680-1 667 (700-1)	2680- $1\frac{3}{4}$ 667 (700- $1\frac{3}{4}$)	2940-3 927 (1000-3)

SC-1, 20 MAR 2025 to 17 APR 2025

SC-1, 20 MAR 2025 to 17 APR 2025