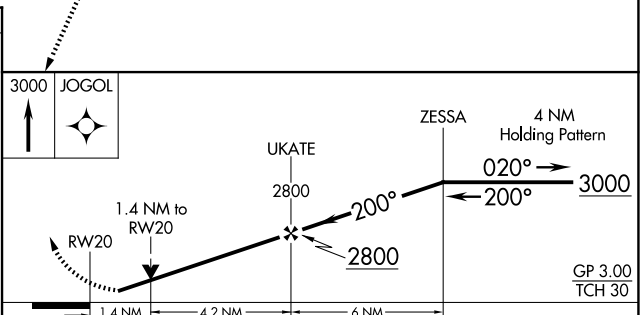
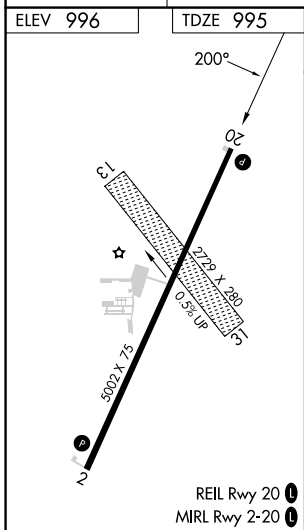
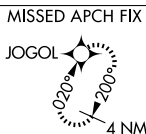
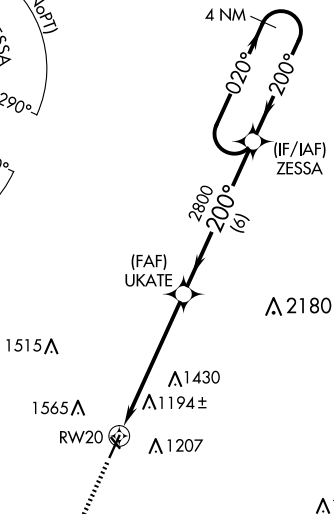
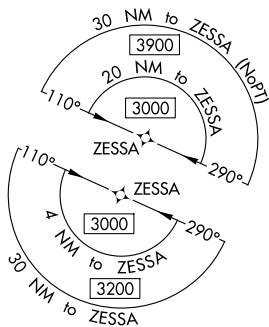


WAAS CH 90541 W20A	APP CRS 200°	Rwy Idg TDZE Apt Elev	5002 995 996
--	------------------------	-----------------------------	---

RNAV (GPS) RWY 20

SCHENCK FLD (ICL)

RNP APCH - GPS.		MISSED APPROACH: Climb to 3000 direct JOGOL and hold.
<p>▼ For uncompensated Baro-VNAV systems, LNAV/VNAV NA below -16°C (4°F) or above 54°C (130°F). Circling NA west of Rwy 2-20. Circling NA to Rwys 13 and 31. Rwy 20 helicopter visibility reduction below ¾ SM NA.</p>		
AWOS-3 132.025	MINNEAPOLIS CENTER 119.6 290.4	UNICOM 122.8 (CTAF) 0



CATEGORY	A	B	C	D
LPV DA	1261-1		266 (300-1)	
LNAV/VNAV DA	1489-1¾		494 (500-1¾)	
LNAV MDA	1460-1		1460-1¾	
CIRCLING	1540-1	1720-1	1780-2¼	1780-2½
	544 (600-1)	724 (800-1)	784 (800-2¼)	784 (800-2½)

NC-3, 20 MAR 2025 to 17 APR 2025

NC-3, 20 MAR 2025 to 17 APR 2025