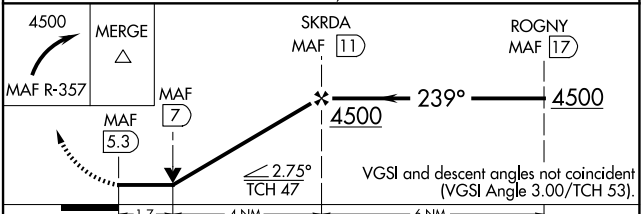
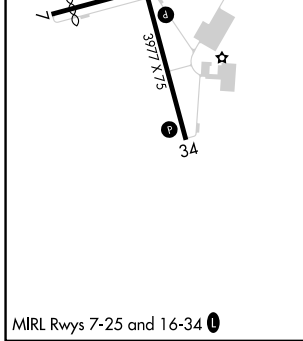
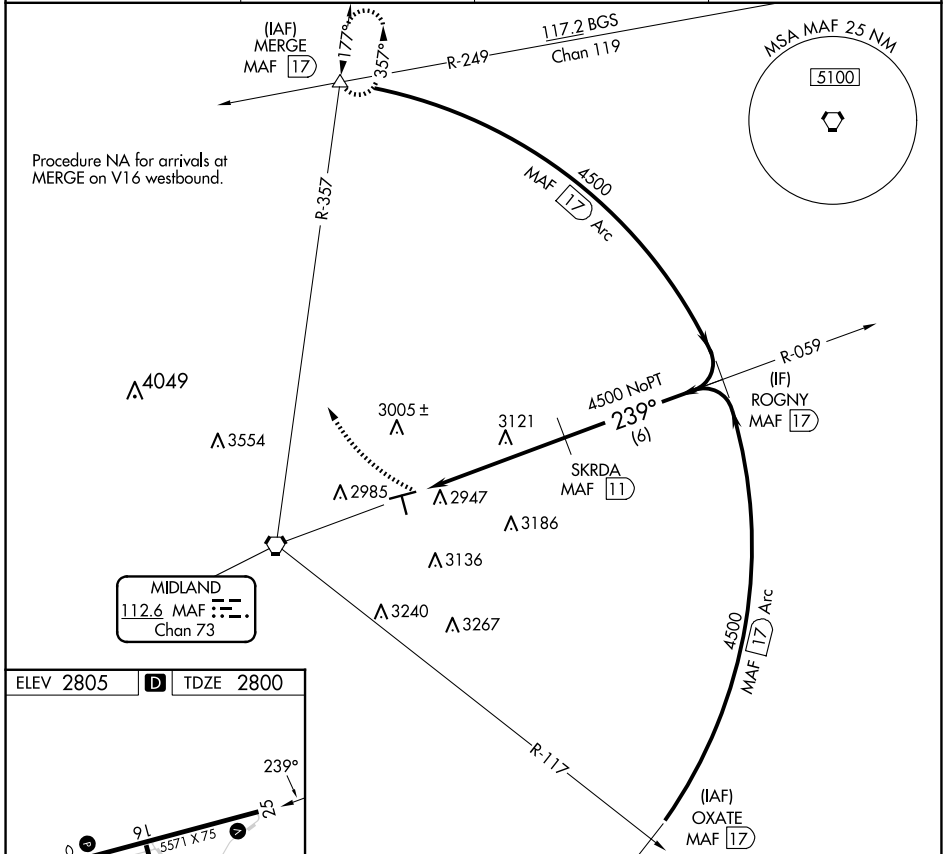


VORTAC MAF <b>112.6</b> Chan <b>73</b>	APP CRS <b>239°</b>	Rwy Idg TDZE Apt Elev	<b>5571</b> <b>2800</b> <b>2805</b>
--	------------------------	-----------------------------	---

# VOR RWY 25

MIDLAND AIRPARK (MIDD)

DME required. RADAR required for procedure entry at OXATE.		MISSED APPROACH: Climbing right turn to 4500 on MAF VORTAC R-357 to MERGE INT/17 DME and hold.	
▼ ▲ Rwy 25 helicopter visibility reduction below 3/4 SM NA.			
AWOS-3 <b>118.125</b>	MIDLAND APP CON * <b>124.6 290.4</b>	CLNC DEL <b>121.8</b>	UNICOM <b>122.7 (CTAF) 0</b>



CATEGORY	A	B	C	D
S-25	3400-1	600 (600-1)	3400-1 <sup>3</sup> / <sub>4</sub>	600 (600-1 <sup>3</sup> / <sub>4</sub> )
CIRCLING	3400-1	595 (600-1)	3440-1 <sup>3</sup> / <sub>4</sub> 635 (700-1 <sup>3</sup> / <sub>4</sub> )	3700-3 895 (900-3)

SC-3, 20 MAR 2025 to 17 APR 2025

SC-3, 20 MAR 2025 to 17 APR 2025