

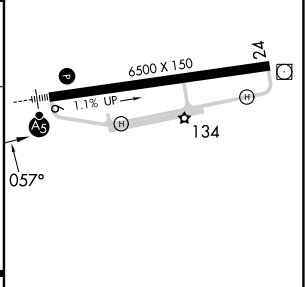
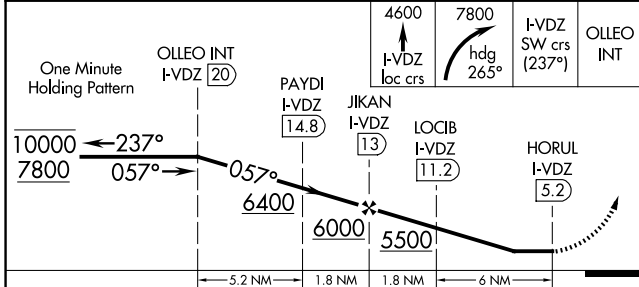
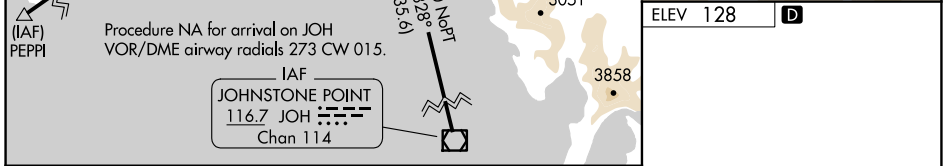
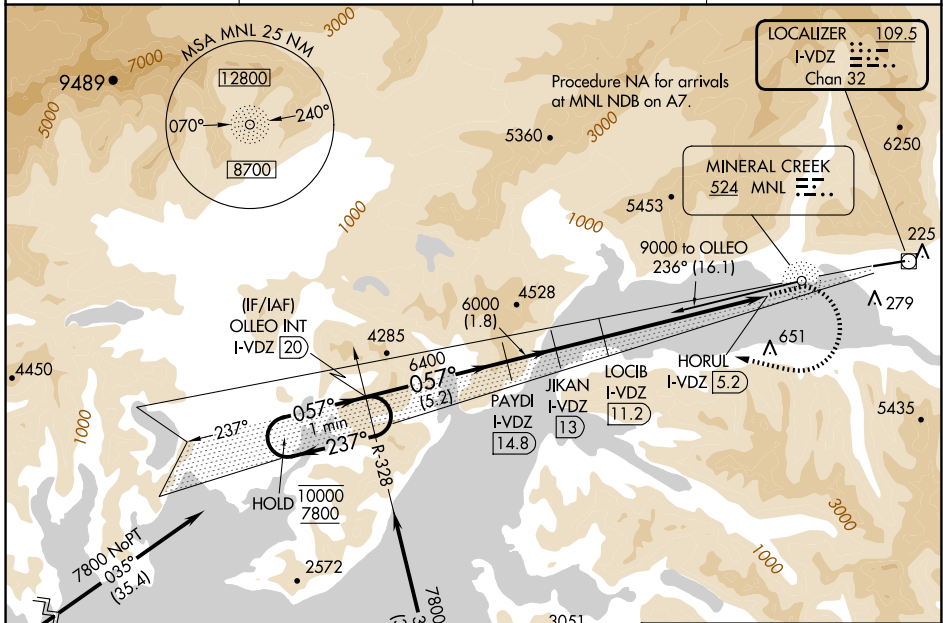
LOC/DME I-VDZ <b>109.5</b> Chan <b>32</b>	APP CRS <b>057°</b>	Rwy Idg TDZE Apt Elev <b>N/A</b> <b>N/A</b> <b>128</b>
---	------------------------	---

# LDA-H

VALDEZ PIONEER FLD (VDZ) (PAVD)

DME required. RNP APCH-GPS. From PEPEI.		<p>MISSED APPROACH: Climb on I-VDZ localizer course to 4600 then climbing right turn to 7800 on heading 265° and I-VDZ SW course (237°) to OLLEO INT/I-VDZ 20 DME and hold, continue climb-in-hold to 7800.</p>
<p>⚠ Circling NA north of Rwy 6-24. Circling Rwy 24 NA at night. Rwy 24 helicopter visibility reduction below 1 SM NA. When local altimeter setting not received, use Cordova altimeter setting and increase all MDAs 1020 feet.</p> <p>❄ -11°C</p>		

AWOS-3P <b>118.8</b>	ANCHORAGE CENTER <b>119.3 269.4</b>	JUNEAU RADIO <b>122.2</b>	CTAF <b>122.9</b>
-------------------------	--	------------------------------	----------------------



CATEGORY	A	B	C	D
CIRCLING	4460-5	4332 (4400-5)		5200-5 5072 (5100-5)

AK, 20 FEB 2025 to 17 APR 2025

AK, 20 FEB 2025 to 17 APR 2025