

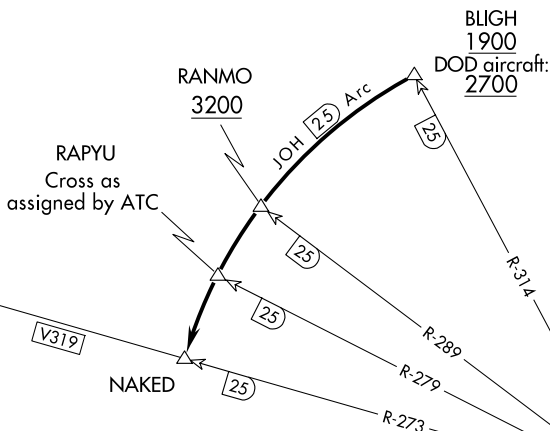
(NAKED6.NAKED) 23334
NAKED SIX DEPARTURE

AL-6213 (FAA)

VALDEZ PIONEER FLD (VDZ) (PAVD)
 VALDEZ, ALASKA

ANCHORAGE CENTER
 119.3 269.4
 JUNEAU RADIO
 122.2
 CTAF
 122.9

**TOP ALTITUDE:
 ASSIGNED BY ATC**



AK, 20 FEB 2025 to 17 APR 2025

AK, 20 FEB 2025 to 17 APR 2025

TAKEOFF MINIMUMS
 Rwy 6, 24: 2000-3 (DOD aircraft 3500-3)
 NA at night.

JOHNSTONE POINT
 116.7 JOH
 Chan 114

NOTE: Do not proceed CCW beyond BLIGH without ATC clearance.
 NOTE: DME required.

NOTE: Chart not to scale.



DEPARTURE ROUTE DESCRIPTION

Proceed in visual conditions from Valdez airport to BLIGH (JOH R-314/25 DME) to cross BLIGH at or above 1900' (visual conditions must be maintained from takeoff until established over BLIGH at or above 1900') (DOD aircraft: Cross BLIGH at or above 2700'). Proceed CCW on JOH 25 DME arc to NAKED; cross RANMO at or above 3200'. Cross RAPHU as assigned by ATC. Thence via (assigned route).

NAKED SIX DEPARTURE
 (NAKED6.NAKED) 21JUL16

VALDEZ, ALASKA
 VALDEZ PIONEER FLD (VDZ) (PAVD)