

RNAV (GPS) RWY 18

APCH CRS	Rwy Idg	6142
161°	TDZE	410
	Arprt Elev	433

[USA]

LAGUNA AAF (KLGf)

RNP APCH - GFS

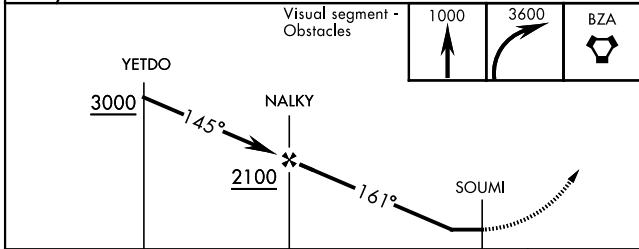
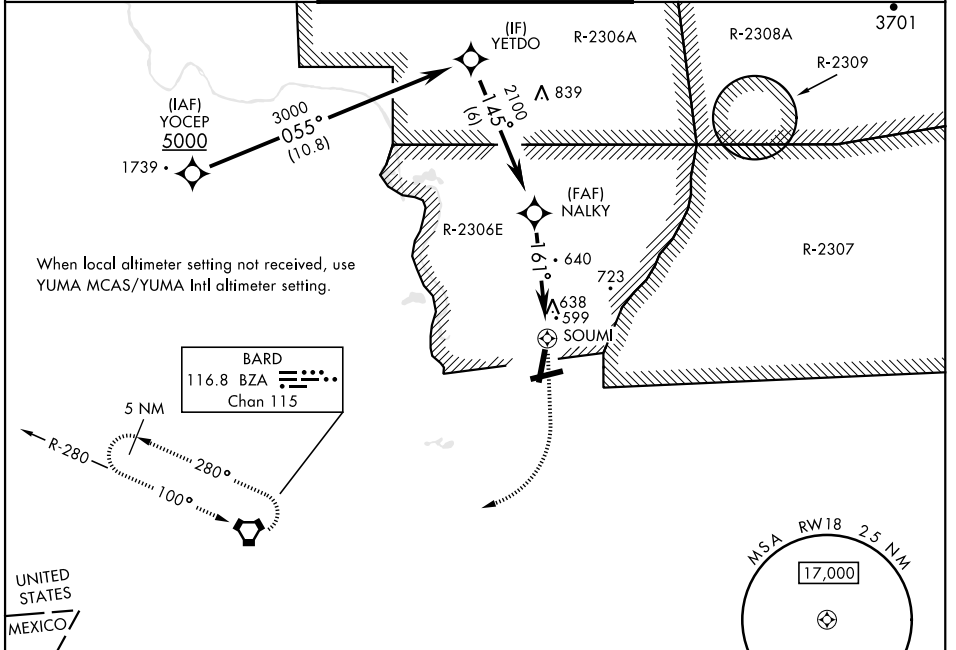
RADAR required for holding.

▼ Procedure not authorized when airfield closed.
 *Circling to Rwy 24 not authorized at night.

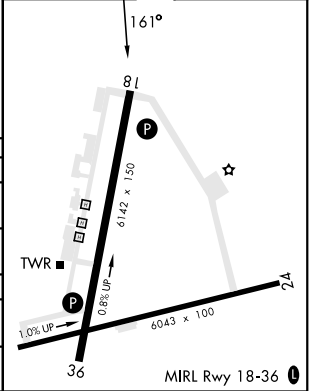
▲ NA Circling not authorized NW of Rwy 6 and 18.

MISSED APPROACH: Climb to 1000, then climbing right turn to 3600 direct BZA VORTAC and hold, continue climbing in hold to 3600.

YUMA APP CON	TOWER ★	GND CON
124.7 371.975	126.2 (CTAF) 242.175	121.8 229.4



ELEV	433	TDZE	410
------	-----	------	-----



CATEGORY	A	B	C	D
LNAV MDA	900-1 490 (500-1)	900-1 490 (500-1)	900-1 490 (500-1)	900-1 490 (500-1)
CIRCLING *	900-1 467 (500-1)	940-1 507 (600-1)	940-1 507 (600-1)	1040-2 607 (700-2)
YUMA MCAS/YUMA Intl ALTIMETER SETTING				
LNAV MDA	980-1 570 (600-1)	980-1 570 (600-1)	980-1 570 (600-1)	980-1 570 (600-1)
CIRCLING *	980-1 547 (600-1)	1020-1 587 (600-1)	1020-1 587 (600-1)	1120-2 687 (700-2)

RNAV (GPS) RWY 18

SW-4, 20 MAR 2025 to 17 APR 2025

SW-4, 20 MAR 2025 to 17 APR 2025