

YUMA PROVING GROUND, ARIZONA

# RNAV (GPS) RWY 6

APCH CRS **063°**  
 Rwy ldg **6043**  
 TDZE **387**  
 Arpt Elev **433**

[USA]

LAGUNA AAF (KLGf)

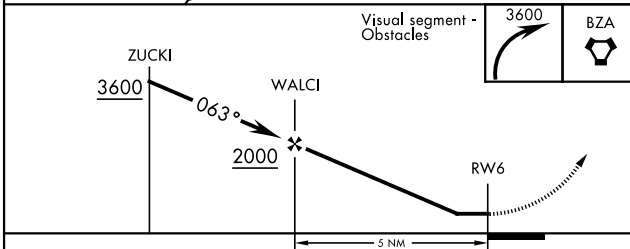
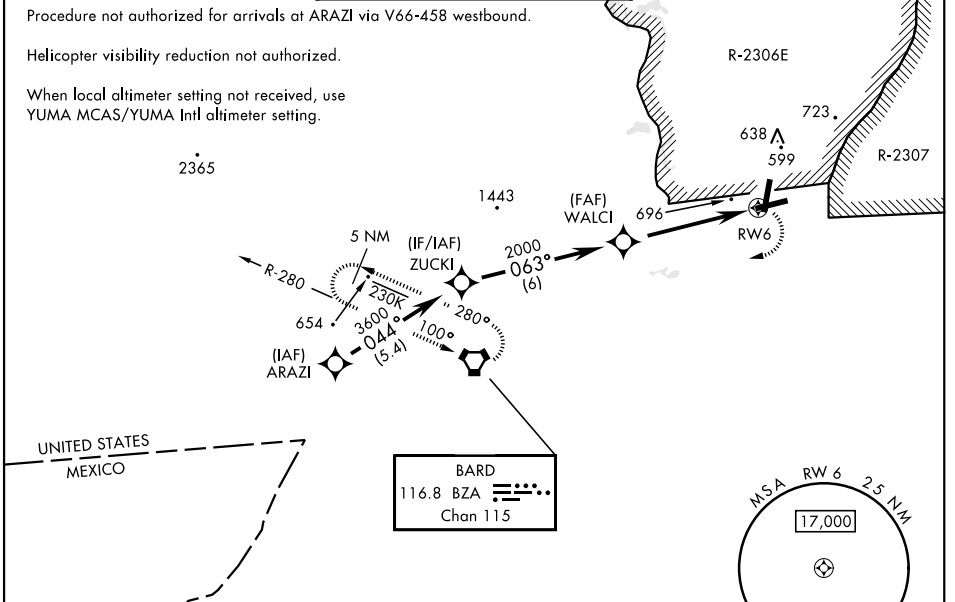
RNP APCH - GPS  
**RADAR required for holding.**  
 Procedure not authorized when airfield closed.  
 \* Straight-in Minimums not authorized at night.  
 \*\* Circling not authorized NW of Rwy 6 and 18.  
 Circling to Rwy 24 not authorized at night.

**MISSED APPROACH:** Climbing right turn to 3600 direct BZA VORTAC and hold.

YUMA APP CON  
**124.7 371.975**

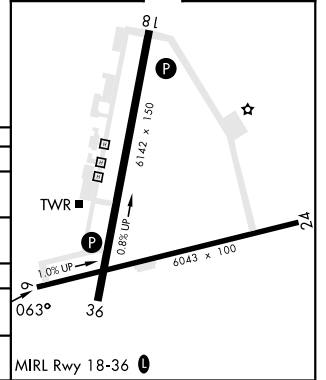
TOWER ★  
**126.2 (CTAF) 242.175**

GND CON  
**121.8 229.4**



ELEV	433	TDZE	387
------	-----	------	-----

CATEGORY	A	B	C	D
LNNAV MDA*	1020-1 633 (600-1)	1020-1¾ 633 (600-1¾)		
CIRCLING**	1080-1 647 (700-1)	1080-1¾ 647 (700-1¾)	1080-2 647 (700-2)	
YUMA MCAS/YUMA Intl ALTIMETER SETTING				
LNNAV MDA*	1100-1 713 (700-1)	1100-2 713 (700-2)		
CIRCLING**	1160-1 727 (800-1)	1160-2 727 (800-2)	1160-2¼ 727 (800-2¼)	



YUMA PROVING GROUND, ARIZONA

32°52'N-114°24'W

LAGUNA AAF (KLGf)

Amdt 1 05OCT23

# RNAV (GPS) RWY 6

SW-4, 20 MAR 2025 to 17 APR 2025

SW-4, 20 MAR 2025 to 17 APR 2025