

YUMA PROVING GROUND, ARIZONA

VOR RWY 6

LAGUNA AAF (KLGf)

VORTAC BZA 116.8 Chan 115	APCH CRS 048°	Rwy Idg TDZE Arprt Elev 6043 387 433
---	-------------------------	--

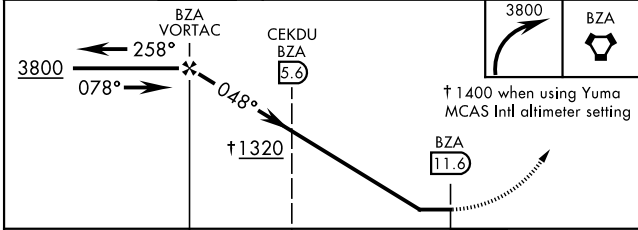
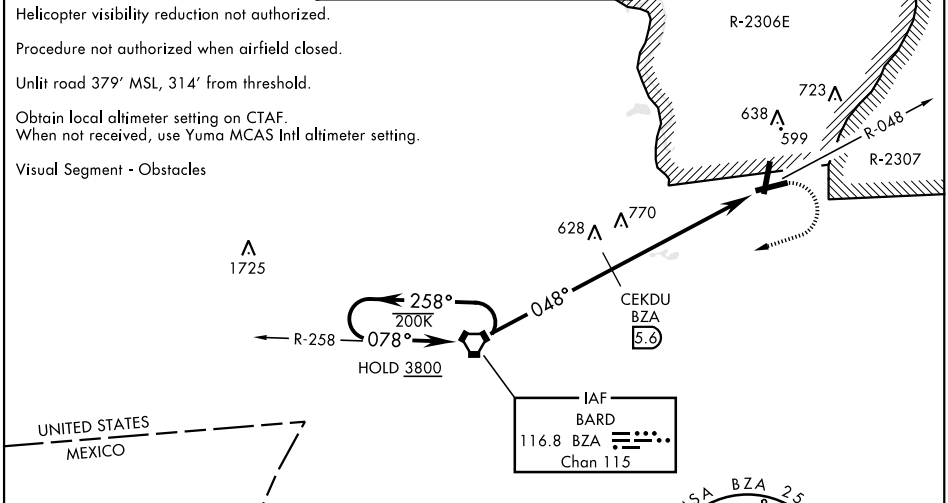
[USA]

RADAR required for holding.

▼ * Procedure not authorized at night.
▲ NA ** Circling not authorized NW of rwy 06 and 18.

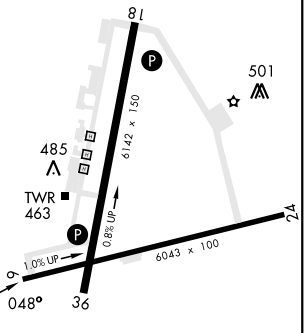
MISSED APPROACH: Climbing right turn to 3800 direct BZA VORTAC and hold, continue climb-in-hold to 3800.

YUMA APP CON 124.7 371.975	TOWER ★ 126.2 (CTAF) 242.175	GND CON 121.8 229.4
--------------------------------------	--	-------------------------------



ELEV 433	TDZE 387
----------	----------

CATEGORY	A	B	C	D
S-6*	1320-1¼ 933 (900-1¼)		1320-2½ 933 (900-2½)	
CIRCLING**	1320-1¼ 887 (900-1¼)		1320-2¾ 887 (900-2¾)	1320-3 887 (900-3)
DME MINIMA				
S-6*	1040-1 653 (700-1)		1040-1⅞ 653 (700-1⅞)	
CIRCLING**	1080-1 647 (700-1)		1080-1⅞ 647 (700-1⅞)	1080-2 647 (700-2)
YUMA MCAS/YUMA Intl ALTIMETER SETTING				
S-6*	1400-1¼ 1013 (1000-1¼)	1400-1½ 1013 (1000-1½)	1400-3 1013 (1000-3)	
CIRCLING**	1400-1¼ 967 (1000-1¼)	1400-1½ 967 (1000-1½)	1400-3 967 (1000-3)	
YUMA MCAS/YUMA Intl ALTIMETER SETTING DME MINIMA				
S-6*	1120-1 733 (700-1)		1120-2 733 (700-2)	
CIRCLING**	1160-1 727 (800-1)		1160-2 727 (800-2)	1160-2¼ 727 (800-2¼)



MIRL Rwy 18-36

FAF to MAP 11.6 NM					
Knots	60	90	120	150	180
Min:Sec	11:36	7:44	5:48	4:38	3:52

YUMA PROVING GROUND, ARIZONA
Amdt 7 05OCT23

32° 52' N - 114° 24' W

LAGUNA AAF (KLGf)

VOR RWY 6

SW-4, 20 MAR 2025 to 17 APR 2025

SW-4, 20 MAR 2025 to 17 APR 2025