

|             |          |             |
|-------------|----------|-------------|
| APP CRS     | Rwy Idg  | <b>4005</b> |
| <b>227°</b> | TDZE     | <b>12</b>   |
|             | Apt Elev | <b>13</b>   |

# RNAV (GPS) RWY 23

DARE COUNTY RGNL (MQI)

RNP APCH - GPS.

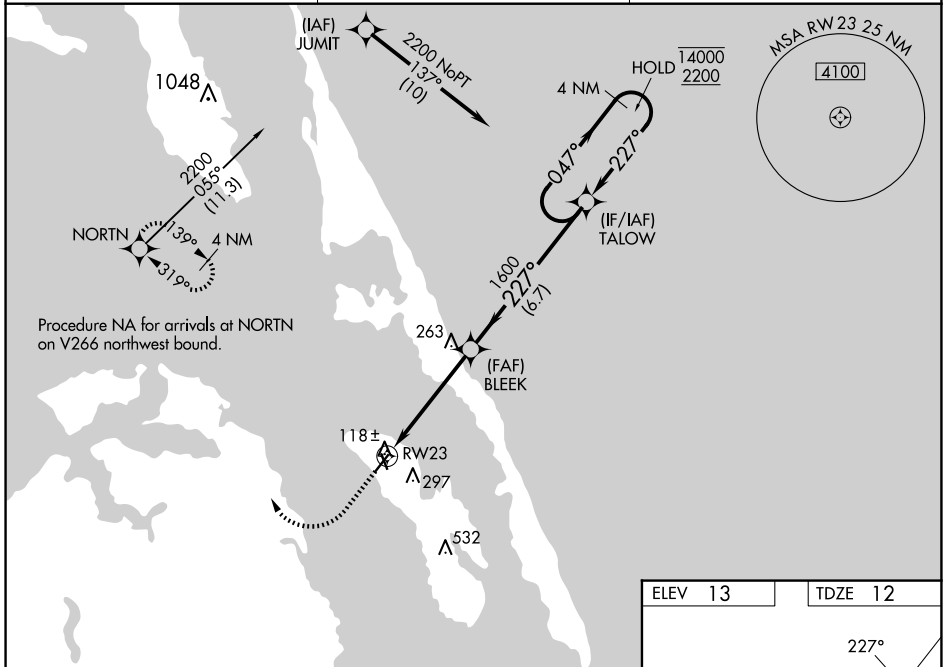
**⚠**  
**⚠** Circling Rwy 17, 35 NA at night. Rwy 23 helicopter visibility reduction below 1 SM NA. Straight-in/Circling Rwy 23 NA at night.

MISSED APPROACH: Climb to 600 then climbing right turn to 4000 direct NORTN and hold, continue climb-in-hold to 4000.

AWOS-3  
**128.275**

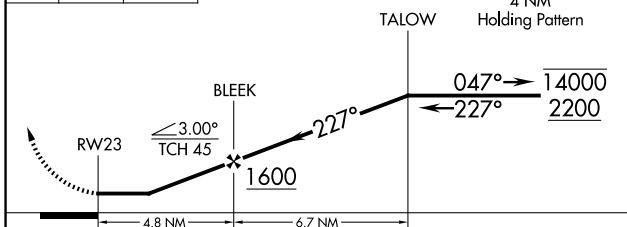
CHERRY POINT APP CON  
**124.725 350.35**

UNICOM  
**122.8(CTAF) 0**



600 4000 NORTN

VGSI and descent angles not coincident (VGSI Angle 4.00/TCH 32).



|         |         |
|---------|---------|
| ELEV 13 | TDZE 12 |
|---------|---------|

REIL Rwy 5 and 23 0  
MIRL Rwy 5-23 and 17-35 0

| CATEGORY          | A                 | B                         | C                         | D  |
|-------------------|-------------------|---------------------------|---------------------------|----|
| RNAV MDA          | 520-1 508 (600-1) | 520-1 508 (600-1 3/8)     | 520-1 3/8 508 (600-1 3/8) | NA |
| <b>C</b> CIRCLING | 600-1 587 (600-1) | 600-1 1/2 587 (600-1 1/2) | 600-1 1/2 587 (600-1 1/2) | NA |

SE-2, 20 MAR 2025 to 17 APR 2025

SE-2, 20 MAR 2025 to 17 APR 2025