

WAAS CH <b>72827</b> <b>W09A</b>	APP CRS <b>088°</b>	Rwy Idg TDZE Apt Elev	<b>4218</b> <b>1021</b> <b>1021</b>
--	------------------------	-----------------------------	---

# RNAV (GPS) RWY 9

UNION COUNTY (MRT)

RNP APCH - GPS.

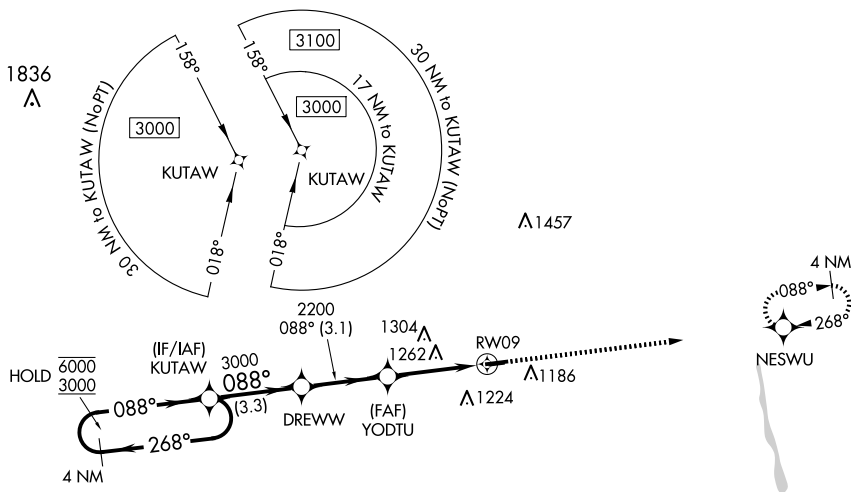
**⚠** When Circling to Rwy 27 at night, operational VGSI required, remain on or above VGSI glidepath until threshold. For uncompensated Baro-VNAV systems, LNAV/VNAV NA below -17°C or above 54°C. Circling NA to Rwy 8 and 26.

MISSED APPROACH: Climb to 3000 direct NESWU and hold.

AWOS-3  
**119.275**

COLUMBUS APP CON  
**125.95 317.775**

UNICOM  
**122.8 (CTAF)**

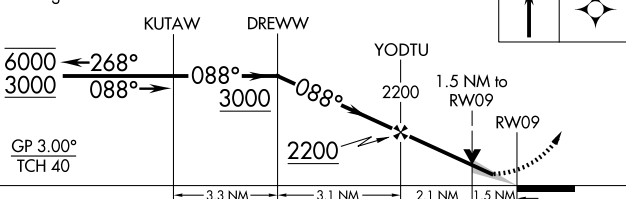


EC-2, 20 MAR 2025 to 17 APR 2025

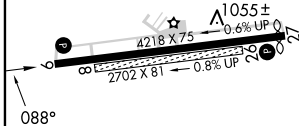
EC-2, 20 MAR 2025 to 17 APR 2025

ELEV 1021	TDZE 1021
-----------	-----------

4 NM Holding Pattern VGSI and RNAV glidepath not coincident (VGSI Angle 3.00/TCH 25).



CATEGORY	A	B	C	D
LPV DA		1285- <sup>7</sup> / <sub>8</sub>	264 (300- <sup>7</sup> / <sub>8</sub> )	
LNAV/VNAV DA		1432-1 <sup>1</sup> / <sub>8</sub>	411 (500-1 <sup>1</sup> / <sub>8</sub> )	
LNAV MDA	1520-1	499 (500-1)	1520-1 <sup>3</sup> / <sub>8</sub>	499 (500-1 <sup>3</sup> / <sub>8</sub> )
CIRCLING	1520-1 499 (500-1)	1540-1 519 (600-1)	1620-1 <sup>1</sup> / <sub>2</sub> 599 (600-1 <sup>1</sup> / <sub>2</sub> )	1620-2 599 (600-2)



MIRL Rwy 9-27  
REIL Rwy 9 and 27