

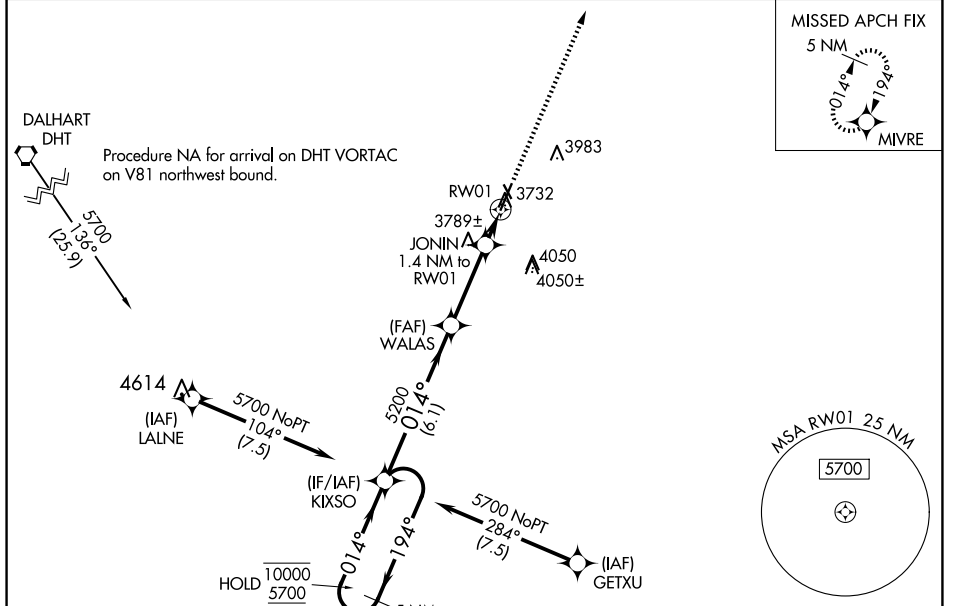
APP CRS	Rwy Idg	6001
014°	TDZE	3706
	Apt Elev	3706

RNAV (GPS) RWY 1

MOORE COUNTY (DUX)

RNP APCH - GPS.	MISSED APPROACH: Climb to 5700 direct MIVRE and hold.
Circling Rwy 14, 32 NA at night.	

AWOS-3 118.075	ALBUQUERQUE CENTER 127.85 285.475	UNICOM 122.8 (CTAF) 0
--------------------------	---	---------------------------------



SC-2, 20 MAR 2025 to 17 APR 2025

SC-2, 20 MAR 2025 to 17 APR 2025

	ELEV 3706	TDZE 3706		
5 NM Holding Pattern	KIXSO	WALAS		
10000 ← 194°	5700 → 014°	5200		
		4200		
		JONIN 1.4 NM to RW01		
		0.9 NM to RW01		
		3.00° TCH 50 RW01		
		6.1 NM		
		3.1 NM		
		0.5 NM		
		0.9 NM		
CATEGORY	A	B	C	D
LNAV MDA	4040-1 334 (400-1)			
CIRCLING	4100-1 394 (400-1)	4300-1 594 (600-1)	4400-2 694 (700-2)	4400-2 1/4 694 (700-2 1/4)

