

VORTAC PER <b>113.2</b> Chan <b>79</b>	APP CRS <b>263°</b>	Rwy Idg TDZE Apt Elev <b>N/A</b> <b>N/A</b> <b>1030</b>
--	------------------------	--

**VOR-A**

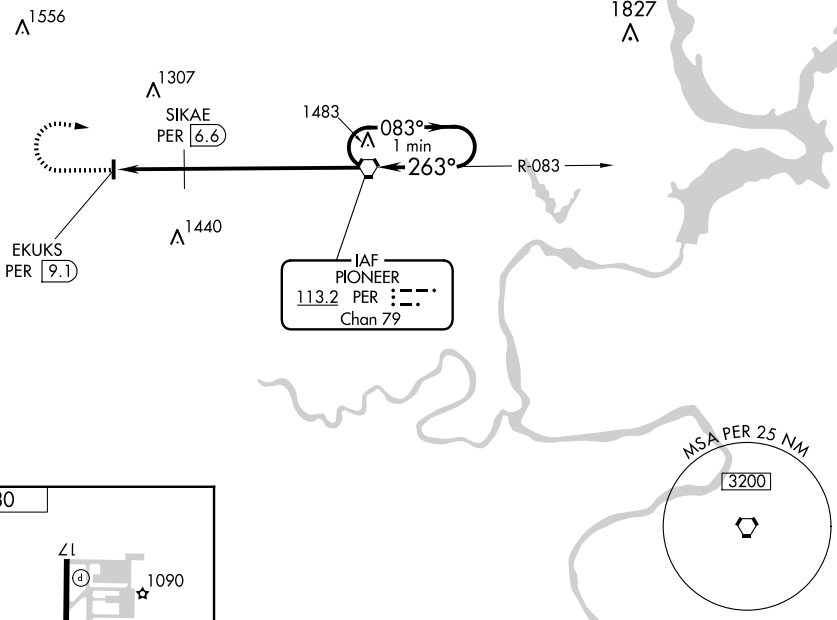
BLACKWELL-TONKAWA MUNI (BKN)

**⚠** When local altimeter setting not received, use Ponca City altimeter setting and increase all MDA 40 feet. **MISSED APPROACH:** Climb to 2800 then right turn direct PER VORTAC and hold.

AWOS-3PT  
**120.575**

KANSAS CITY CENTER  
**127.8 319.1**

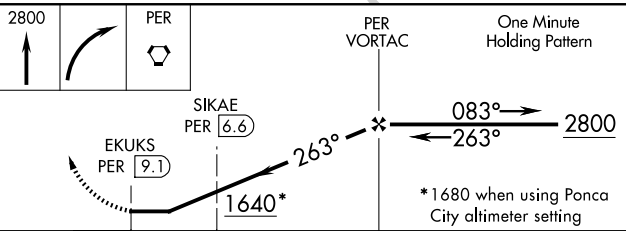
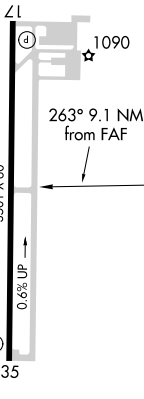
UNICOM  
**122.8** (CTAF) **①**



SC-1, 20 MAR 2025 to 17 APR 2025

SC-1, 20 MAR 2025 to 17 APR 2025

ELEV 1030



MIRL Rwy 17-35	35
FAF to MAP 9.1 NM	
Knots	60 90 120 150 180
Min:Sec	9:06 6:04 4:33 3:38 3:02

CATEGORY	A	B	C	D
CIRCLING	1640-1	610 (700-1)	1640-1 <sup>3</sup> / <sub>4</sub> 610 (700-1 <sup>3</sup> / <sub>4</sub> )	NA
SIKAE FIX MINIMUMS				
CIRCLING	1440-1 410 (500-1)	1480-1 450 (500-1)	1620-1 <sup>3</sup> / <sub>4</sub> 590 (600-1 <sup>3</sup> / <sub>4</sub> )	NA